

A16419

Leader in Biomolecular Solutions for Life Science



PRSS8 Rabbit pAb

Catalog No.: A16419

Basic Information

Observed MW

36kDa

Calculated MW

36kDa

Category

Polyclonal Antibody

Applications

WB, IF/ICC, ELISA

Cross-Reactivity

Human, Mouse, Rat

Background

This gene encodes a member of the peptidase S1 or chymotrypsin family of serine proteases. The encoded preproprotein is proteolytically processed to generate light and heavy chains that associate via a disulfide bond to form the heterodimeric enzyme. This enzyme is highly expressed in prostate epithelia and is one of several proteolytic enzymes found in seminal fluid. This protease exhibits trypsin-like substrate specificity, cleaving protein substrates at the carboxyl terminus of lysine or arginine residues. The encoded protease partially mediates proteolytic activation of the epithelial sodium channel, a regulator of sodium balance, and may also play a role in epithelial barrier formation.

Recommended Dilutions

WB	1:500 - 1:2000
IF/ICC	1:50 - 1:200

Immunogen Information

Gene ID

5652

Swiss Prot

Q16651

Immunogen

A synthetic peptide corresponding to a sequence within amino acids 200 to the C-terminus of human PRSS8 (NP_002764.1).

Synonyms

CAP1; PROSTASIN; PRSS8

Contact



www.abclonal.com

Product Information

Source

Rabbit

Isotype

IgG

Purification

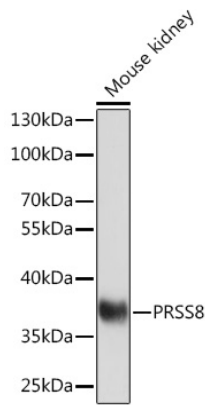
Affinity purification

Storage

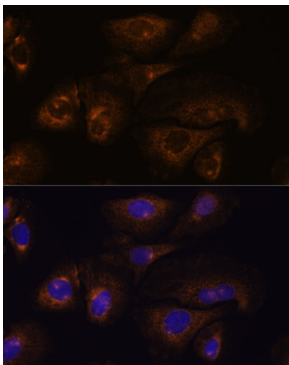
Store at -20°C. Avoid freeze / thaw cycles.

Buffer: PBS with 0.01% thimerosal, 50% glycerol, pH7.3.

Validation Data



Western blot analysis of lysates from Mouse kidney, using PRSS8 Rabbit pAb (A16419) at 1:1000 dilution.
Secondary antibody: HRP Goat Anti-Rabbit IgG (H+L) (AS014) at 1:10000 dilution.
Lysates/proteins: 25µg per lane.
Blocking buffer: 3% nonfat dry milk in TBST.
Detection: ECL Basic Kit (RM00020).
Exposure time: 10s.



Immunofluorescence analysis of U-2 OS cells using PRSS8 Rabbit pAb (A16419) at dilution of 1:100. Secondary antibody: Cy3 Goat Anti-Rabbit IgG (H+L) (AS007) at 1:500 dilution. Blue: DAPI for nuclear staining.