

A1628

Leader in Biomolecular Solutions for Life Science



## GSTA1 Rabbit pAb

Catalog No.: A1628

3 Publications

### Basic Information

#### Observed MW

26kDa

#### Calculated MW

26kDa

#### Category

Polyclonal Antibody

#### Applications

WB, ELISA

#### Cross-Reactivity

Human, Rat

### Background

This gene encodes a member of a family of enzymes that function to add glutathione to target electrophilic compounds, including carcinogens, therapeutic drugs, environmental toxins, and products of oxidative stress. This action is an important step in detoxification of these compounds. This subfamily of enzymes has a particular role in protecting cells from reactive oxygen species and the products of peroxidation. Polymorphisms in this gene influence the ability of individuals to metabolize different drugs. This gene is located in a cluster of similar genes and pseudogenes on chromosome 6. Alternative splicing results in multiple transcript variants.

### Recommended Dilutions

WB 1:500 - 1:1000

### Immunogen Information

#### Gene ID

2938

#### Swiss Prot

P08263

#### Immunogen

Recombinant fusion protein containing a sequence corresponding to amino acids 1-222 of human GSTA1 (NP\_665683.1).

#### Synonyms

GST2; GTH1; GSTA1-1; GST-epsilon; GSTA1

### Contact



[www.abclonal.com](http://www.abclonal.com)

### Product Information

#### Source

Rabbit

#### Isotype

IgG

#### Purification

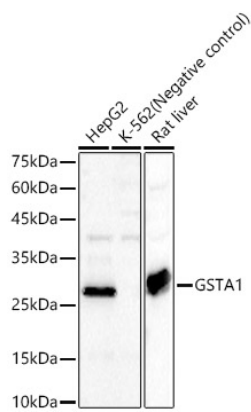
Affinity purification

#### Storage

Store at -20°C. Avoid freeze / thaw cycles.

Buffer: PBS with 0.02% sodium azide, 50% glycerol, pH 7.3.

# Validation Data



Western blot analysis of various lysates, using GSTA1 Rabbit pAb (A1628) at 1:1000 dilution.  
Secondary antibody: HRP Goat Anti-Rabbit IgG (H+L) (AS014) at 1:10000 dilution.  
Lysates/proteins: 25µg per lane.  
Blocking buffer: 3% nonfat dry milk in TBST.  
Detection: ECL Basic Kit (RM00020).  
Exposure time: 90s.