

## Pan Acetyl-Lysine mAb

<b>Catalog No</b>	A1525	<b>Category</b>	Acetylated Antibodies
<b>Applications</b>	WB	<b>Observed MW</b>	Refer to Figures
<b>Cross-Reactivity</b>	ALL	<b>Calculated MW</b>	

### Immunogen Information

**Immunogen** Acetylated BSA

**Gene ID**

**Swiss Prot**

**Synonyms**

### Product information

**Source** Mouse

**Isotype** IgG

**Purity** Affinity purification

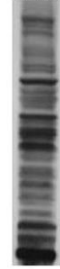
**Storage** Store at -20°C. Avoid freeze / thaw cycles.  
Buffer: PBS with 0.02% sodium azide, 50% glycerol, pH7.3.

### Background

### Recommended Dilutions

WB 1:500 - 1:1000

HeLa



Western blot analysis of extracts of HeLa cells, using Pan Acetyllysine antibody (A1525).