

A15133

Leader in Biomolecular Solutions for Life Science



IFITM2 Rabbit pAb

Catalog No.: A15133

2 Publications

Basic Information

Observed MW

17kDa

Calculated MW

15kDa

Category

Polyclonal Antibody

Applications

WB, ELISA

Cross-Reactivity

Human

Background

Interferon-induced transmembrane (IFITM) proteins are a family of interferon induced antiviral proteins. The family contains five members, including IFITM1, IFITM2 and IFITM3 and belong to the CD225 superfamily. The protein encoded by this gene restricts cellular entry by diverse viral pathogens, such as influenza A virus, Ebola virus and Sars-CoV-2.

Recommended Dilutions

WB 1:500 - 1:2000

Immunogen Information

Gene ID

10581

Swiss Prot

Q01629

Immunogen

A synthetic peptide corresponding to a sequence within amino acids 1-100 of human IFITM2 (NP_006426.2).

Synonyms

1-8D; DSPA2c; IFITM2

Contact



www.abclonal.com

Product Information

Source

Rabbit

Isotype

IgG

Purification

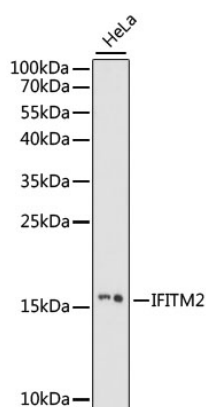
Affinity purification

Storage

Store at -20°C. Avoid freeze / thaw cycles.

Buffer: PBS with 0.01% thimerosal, 50% glycerol, pH 7.3.

Validation Data



Western blot analysis of lysates from HeLa cells, using IFITM2 Rabbit pAb (A15133) at 1:1000 dilution.
Secondary antibody: HRP Goat Anti-Rabbit IgG (H+L) (A5014) at 1:10000 dilution.
Lysates/proteins: 25µg per lane.
Blocking buffer: 3% nonfat dry milk in TBST.
Detection: ECL Basic Kit (RM00020).
Exposure time: 60s.