

HMOX1 Polyclonal Antibody

Catalog No	A1346	Category	Polyclonal Antibodies
Applications	WB,IF	Observed MW	33kDa
Cross-Reactivity	Human,Mouse	Calculated MW	32kDa

Immunogen Information

Immunogen	Recombinant protein of human HMOX1
Gene ID	3162
Swiss Prot	P09601
Synonyms	bK286B10,HMOX1D,HO-1,HSP32

Product information

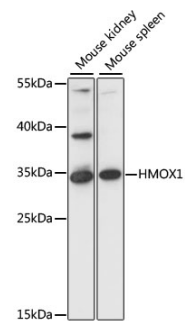
Source	Rabbit
Isotype	IgG
Purity	Affinity purification
Storage	Store at -20°C. Avoid freeze / thaw cycles. Buffer: PBS with 0.02% sodium azide, 50% glycerol, pH7.3.

Background

Heme oxygenase, an essential enzyme in heme catabolism, cleaves heme to form biliverdin, which is subsequently converted to bilirubin by biliverdin reductase, and carbon monoxide, a putative neurotransmitter. Heme oxygenase activity is induced by its substrate heme and by various nonheme substances. Heme oxygenase occurs as 2 isozymes, an inducible heme oxygenase-1 and a constitutive heme oxygenase-2. HMOX1 and HMOX2 belong to the heme oxygenase family.

Recommended Dilutions

WB	1:500 - 1:2000
IF	1:50 - 1:200



Western blot analysis of extracts of various cell lines, using HMOX1 antibody (A1346) at 1:1000 dilution. Secondary antibody: HRP Goat Anti-Rabbit IgG (H+L) (AS014) at 1:10000 dilution.
Lysates/proteins: 25ug per lane.
Blocking buffer: 3% nonfat dry milk in TBST.
Detection: ECL Basic Kit (RM00020).
Exposure time: 90s.