

A12652

Leader in Biomolecular Solutions for Life Science



WVOX Rabbit pAb

Catalog No.: A12652

1 Publications

Basic Information

Observed MW

46kDa

Calculated MW

47kDa

Category

Mouse Monoclonal Antibody

Applications

WB, IF/ICC, ELISA

Cross-Reactivity

Human, Mouse

Background

This gene encodes a member of the short-chain dehydrogenases/reductases (SDR) protein family. This gene spans the FRA16D common chromosomal fragile site and appears to function as a tumor suppressor gene. Expression of the encoded protein is able to induce apoptosis, while defects in this gene are associated with multiple types of cancer. Disruption of this gene is also associated with autosomal recessive spinocerebellar ataxia 12.

Disruption of a similar gene in mouse results in impaired steroidogenesis, additionally suggesting a metabolic function for the protein. Alternative splicing results in multiple transcript variants.

Recommended Dilutions

WB 1:1000 - 1:2000

IF/ICC 1:50 - 1:200

Immunogen Information

Gene ID

51741

Swiss Prot

Q9NZC7

Immunogen

Recombinant fusion protein containing a sequence corresponding to amino acids 1-120 of human WVOX (NP_057457.1).

Synonyms

FOR; WOX1; DEE28; EIEE28; FRA16D; SCAR12; HHCMA56; PRO0128; SDR41C1; D16S432E; WVOX

Contact



www.abclonal.com

Product Information

Source

Rabbit

Isotype

IgG

Purification

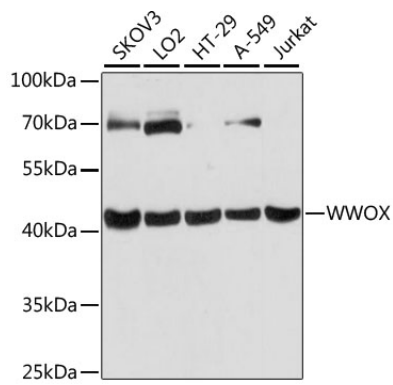
Affinity purification

Storage

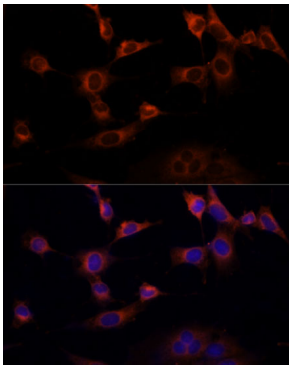
Store at -20°C. Avoid freeze / thaw cycles.

Buffer: PBS with 0.01% thimerosal, 50% glycerol, pH 7.3.

Validation Data



Western blot analysis of various lysates using WWOX Rabbit pAb (A12652) at 1:3000 dilution.
Secondary antibody: HRP Goat Anti-Rabbit IgG (H+L) (AS014) at 1:10000 dilution.
Lysates/proteins: 25µg per lane.
Blocking buffer: 3% nonfat dry milk in TBST.
Detection: ECL Basic Kit (RM00020).
Exposure time: 10s.



Immunofluorescence analysis of NIH-3T3 cells using WWOX Rabbit pAb (A12652) at dilution of 1:100 (40x lens). Secondary antibody: Cy3 Goat Anti-Rabbit IgG (H+L) (AS007) at 1:500 dilution. Blue: DAPI for nuclear staining.