

A1244

Leader in Biomolecular Solutions for Life Science



## NRF2 Rabbit pAb

Catalog No.: A1244

50 Publications

### Basic Information

#### Observed MW

100kDa

#### Calculated MW

68kDa

#### Category

Mouse Monoclonal Antibody

#### Applications

WB, IHC-P, ELISA

#### Cross-Reactivity

Human, Mouse, Rat

### Background

This gene encodes a transcription factor which is a member of a small family of basic leucine zipper (bZIP) proteins. The encoded transcription factor regulates genes which contain antioxidant response elements (ARE) in their promoters; many of these genes encode proteins involved in response to injury and inflammation which includes the production of free radicals. Multiple transcript variants encoding different isoforms have been characterized for this gene.

### Recommended Dilutions

WB	1:1000 - 1:5000
IHC-P	1:50 - 1:200

### Immunogen Information

#### Gene ID

4780

#### Swiss Prot

Q16236

#### Immunogen

Recombinant fusion protein containing a sequence corresponding to amino acids 243-400 of human NRF2 (NP\_006155.2).

#### Synonyms

NRF2; HEBP1; Nrf-2; IMDDHH

### Contact



[www.abclonal.com](http://www.abclonal.com)

### Product Information

#### Source

Rabbit

#### Isotype

IgG

#### Purification

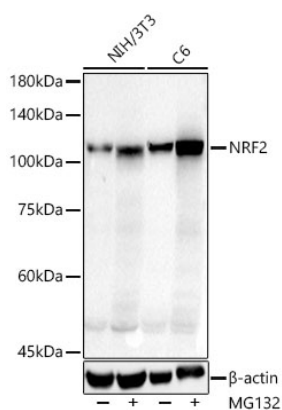
Affinity purification

#### Storage

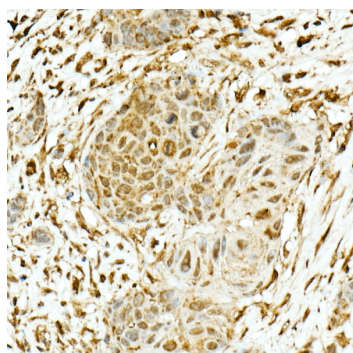
Store at -20°C. Avoid freeze / thaw cycles.

Buffer: PBS with 0.05% proclin300, 50% glycerol, pH7.3.

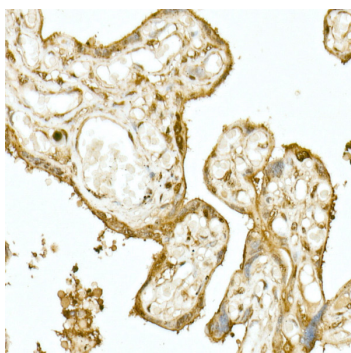
## Validation Data



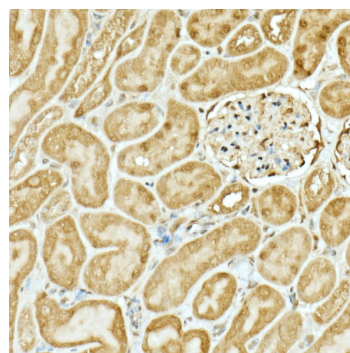
Western blot analysis of lysates from NIH/3T3,C6 cells using NRF2 Rabbit pAb (A1244) at 1:1000 dilution. NIH/3T3 cells and C6 cells were treated by MG132(10  $\mu$ M) at 37°C for 90 minutes. Secondary antibody: HRP Goat Anti-Rabbit IgG (H+L) (AS014) at 1:10000 dilution. Lysates/proteins: 45  $\mu$ g per lane. Blocking buffer: 3% nonfat dry milk in TBST. Detection: ECL Basic Kit (RM00020). Exposure time: 10s.



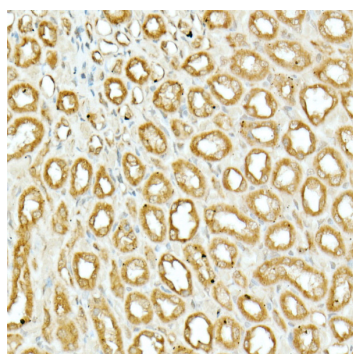
Immunohistochemistry analysis of NRF2 in paraffin-embedded human esophageal cancer using NRF2 Rabbit pAb (A1244) at dilution of 1:200 (40x lens).Perform high pressure antigen retrieval with 10 mM citrate buffer pH 6.0 before commencing with IHC staining protocol.



Immunohistochemistry analysis of NRF2 in paraffin-embedded human placenta using NRF2 Rabbit pAb (A1244) at dilution of 1:200 (40x lens).Perform high pressure antigen retrieval with 10 mM citrate buffer pH 6.0 before commencing with IHC staining protocol.



Immunohistochemistry analysis of NRF2 in paraffin-embedded mouse kidney using NRF2 Rabbit pAb (A1244) at dilution of 1:200 (40x lens).Perform high pressure antigen retrieval with 10 mM citrate buffer pH 6.0 before commencing with IHC staining protocol.



Immunohistochemistry analysis of NRF2 in paraffin-embedded rat kidney using NRF2 Rabbit pAb (A1244) at dilution of 1:200 (40x lens).Perform high pressure antigen retrieval with 10 mM citrate buffer pH 6.0 before commencing with IHC staining protocol.