

A12407

Leader in Biomolecular Solutions for Life Science



SERPING1 Rabbit pAb

Catalog No.: A12407

2 Publications

Basic Information

Observed MW

60kDa

Calculated MW

55kDa

Category

Polyclonal Antibody

Applications

WB, IF/ICC, ELISA

Cross-Reactivity

Human, Mouse

Background

This gene encodes a highly glycosylated plasma protein involved in the regulation of the complement cascade. Its encoded protein, C1 inhibitor, inhibits activated C1r and C1s of the first complement component and thus regulates complement activation. It is synthesized in the liver, and its deficiency is associated with hereditary angioneurotic oedema (HANE). Alternative splicing results in multiple transcript variants encoding the same isoform.

Recommended Dilutions

WB	1:500 - 1:1000
IF/ICC	1:50 - 1:200

Immunogen Information

Gene ID

710

Swiss Prot

P05155

Immunogen

Recombinant fusion protein containing a sequence corresponding to amino acids 23-500 of human SERPING1 (NP_000053.2).

Synonyms

C1IN; C1NH; HAE1; HAE2; C1INH; SERPING1

Contact



www.abclonal.com

Product Information

Source

Rabbit

Isotype

IgG

Purification

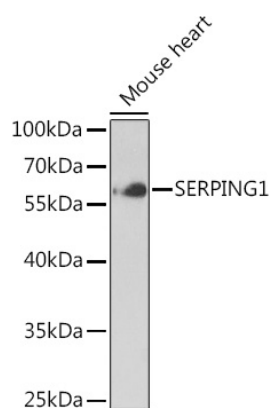
Affinity purification

Storage

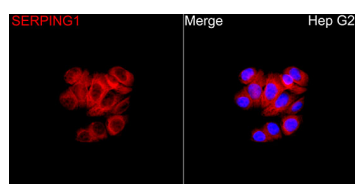
Store at -20°C. Avoid freeze / thaw cycles.

Buffer: PBS with 0.02% sodium azide, 50% glycerol, pH 7.3.

Validation Data



Western blot analysis of lysates from mouse heart, using SERPING1 Rabbit pAb (A12407) at 1:1000 dilution.
Secondary antibody: HRP Goat Anti-Rabbit IgG (H+L) (AS014) at 1:10000 dilution.
Lysates/proteins: 25µg per lane.
Blocking buffer: 3% nonfat dry milk in TBST.



Immunofluorescence analysis of Hep G2 cells using SERPING1 Rabbit pAb (A12407) at a dilution of 1:100 (40x lens). Secondary antibody: Cy3 Goat Anti-Rabbit IgG (H+L) (AS007) at 1:500 dilution. Blue: DAPI for nuclear staining.