

A12043

Leader in Biomolecular Solutions for Life Science



## XPOT Rabbit pAb

Catalog No.: A12043

1 Publications

### Basic Information

#### Observed MW

100kDa

#### Calculated MW

110kDa

#### Category

Polyclonal Antibody

#### Applications

WB, ELISA

#### Cross-Reactivity

Human, Mouse, Rat

### Background

This gene encodes a protein belonging to the RAN-GTPase exportin family that mediates export of tRNA from the nucleus to the cytoplasm. Translocation of tRNA to the cytoplasm occurs once exportin has bound both tRNA and GTP-bound RAN.

### Recommended Dilutions

WB 1:500 - 1:2000

### Immunogen Information

#### Gene ID

11260

#### Swiss Prot

O43592

#### Immunogen

Recombinant fusion protein containing a sequence corresponding to amino acids 1-200 of human XPOT (NP\_009166.2).

#### Synonyms

XPO3; XPOT

### Contact



[www.abclonal.com](http://www.abclonal.com)

### Product Information

#### Source

Rabbit

#### Isotype

IgG

#### Purification

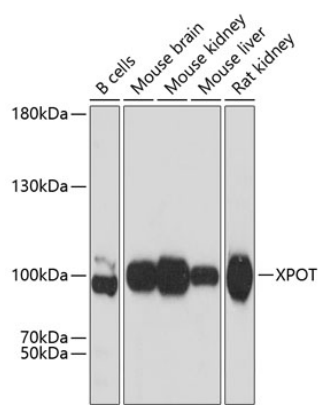
Affinity purification

#### Storage

Store at -20°C. Avoid freeze / thaw cycles.

Buffer: PBS with 0.01% thimerosal, 50% glycerol, pH 7.3.

Validation Data



Western blot analysis of various lysates using XPOT Rabbit pAb (A12043) at 1:3000 dilution.  
Secondary antibody: HRP Goat Anti-Rabbit IgG (H+L) (AS014) at 1:10000 dilution.  
Lysates/proteins: 25µg per lane.  
Blocking buffer: 3% nonfat dry milk in TBST.  
Detection: ECL Basic Kit (RM00020).  
Exposure time: 10s.