

A12019

Leader in Biomolecular Solutions for Life Science



OCEL1 Rabbit pAb

Catalog No.: A12019

Basic Information

Observed MW

29kDa

Calculated MW

25kDa

Category

Polyclonal Antibody

Applications

WB, ELISA

Cross-Reactivity

Human

Background

Orthologous to human OCEL1 (occludin/ELL domain containing 1).

Recommended Dilutions

WB 1:500 - 1:2000

Immunogen Information

Gene ID

77090

Swiss Prot

Immunogen

Recombinant fusion protein containing a sequence corresponding to amino acids 1-219 of mouse OCEL1 (NP_084141.2).

Synonyms

9430098E02Rik; OCEL1

Contact



www.abclonal.com

Product Information

Source

Rabbit

Isotype

IgG

Purification

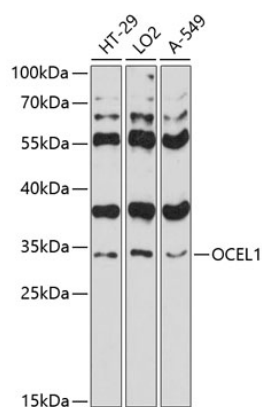
Affinity purification

Storage

Store at -20°C. Avoid freeze / thaw cycles.

Buffer: PBS with 0.01% thimerosal, 50% glycerol, pH7.3.

Validation Data



Western blot analysis of various lysates using OCEL1 Rabbit pAb (A12019) at 1:3000 dilution.
Secondary antibody: HRP Goat Anti-Rabbit IgG (H+L) (AS014) at 1:10000 dilution.
Lysates/proteins: 25µg per lane.
Blocking buffer: 3% nonfat dry milk in TBST.
Detection: ECL Basic Kit (RM00020).
Exposure time: 90s.