

QRSL1 Rabbit pAb

Catalog No.: A11820

Basic Information

Observed MW

53kDa

Calculated MW

57kDa

Category

Primary antibody

Applications

WB

Cross-Reactivity

Human

Background

Enables glutamyl-tRNA synthase (glutamine-hydrolyzing) activity. Involved in glutamyl-tRNA^{Gln} biosynthesis via transamidation and mitochondrial translation. Located in mitochondrion. Part of glutamyl-tRNA(Gln) amidotransferase complex. Implicated in combined oxidative phosphorylation deficiency 40.

Recommended Dilutions

WB 1:500 - 1:2000

Immunogen Information

Gene ID

55278

Swiss Prot

Q9H0R6

Immunogen

A synthetic peptide of human QRSL1

Synonyms

GatA; COXPD40; QRSL1

Contact

 | www.abclonal.com

Product Information

Source

Rabbit

Isotype

IgG

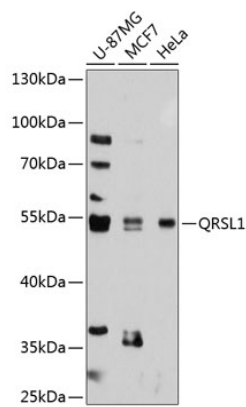
Purification

Affinity purification

Storage

Store at 4°C. Avoid freeze / thaw cycles.
Buffer: PBS with 0.02% sodium azide, pH7.3.

Validation Data



Western blot analysis of various lysates using QRSL1 Rabbit pAb (A11820) at 1:1000 dilution. Secondary antibody: HRP Goat Anti-Rabbit IgG (H+L) (A5014) at 1:10000 dilution. Lysates/proteins: 25µg per lane. Blocking buffer: 3% nonfat dry milk in TBST. Detection: ECL Basic Kit (RM00020). Exposure time: 90s.