

A1156

Leader in Biomolecular Solutions for Life Science



## KDM1 Rabbit pAb

Catalog No.: A1156

4 Publications

### Basic Information

#### Observed MW

117kDa

#### Calculated MW

93kDa

#### Category

Polyclonal Antibody

#### Applications

WB,IP,ELISA

#### Cross-Reactivity

Human,Mouse,Rat

### Background

This gene encodes a nuclear protein containing a SWIRM domain, a FAD-binding motif, and an amine oxidase domain. This protein is a component of several histone deacetylase complexes, though it silences genes by functioning as a histone demethylase. Alternative splicing results in multiple transcript variants.

### Recommended Dilutions

WB 1:500 - 1:2000

IP 0.5µg-4µg antibody for  
200µg-400µg extracts of  
whole cells

### Immunogen Information

#### Gene ID

23028

#### Swiss Prot

O60341

#### Immunogen

Recombinant fusion protein containing a sequence corresponding to amino acids 365-515 of human KDM1 (NP\_055828.2).

#### Synonyms

AOF2; CPRF; KDM1; LSD1; BHC110

### Contact



[www.abclonal.com](http://www.abclonal.com)

### Product Information

#### Source

Rabbit

#### Isotype

IgG

#### Purification

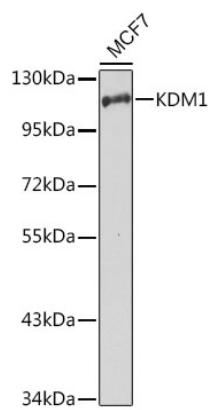
Affinity purification

#### Storage

Store at -20°C. Avoid freeze / thaw cycles.

Buffer: PBS with 0.01% thimerosal, 50% glycerol, pH7.3.

Validation Data



Western blot analysis of lysates from MCF7 cells, using KDM1 Rabbit pAb (A1156) at 1:1000 dilution.  
Secondary antibody: HRP Goat Anti-Rabbit IgG (H+L) (AS014) at 1:10000 dilution.  
Lysates/proteins: 25µg per lane.  
Blocking buffer: 3% nonfat dry milk in TBST.  
Detection: ECL Basic Kit (RM00020).

Immunoprecipitation analysis of 200 µg extracts of HeLa cells using 3 µg KDM1 antibody (A1156).  
Western blot was performed from the immunoprecipitate using KDM1 antibody (A1156) at a dilution of 1:500.

