

A11401

Leader in Biomolecular Solutions for Life Science



Cytokeratin 20 (KRT20) Rabbit mAb

Catalog No.: A11401 **Recombinant**

Basic Information

Observed MW

48kDa

Calculated MW

48kDa

Category

SMab Recombinant Monoclonal Antibody

Applications

WB, IHC-P, IF/ICC, IP, ELISA

Cross-Reactivity

Human, Rat

Background

The protein encoded by this gene is a member of the keratin family. The keratins are intermediate filament proteins responsible for the structural integrity of epithelial cells and are subdivided into cytokeratins and hair keratins. The type I cytokeratins consist of acidic proteins which are arranged in pairs of heterotypic keratin chains. This cytokeratin is a major cellular protein of mature enterocytes and goblet cells and is specifically expressed in the gastric and intestinal mucosa. The type I cytokeratin genes are clustered in a region of chromosome 17q12-q21.

Recommended Dilutions

WB	1:500 - 1:2000
IHC-P	1:50 - 1:200
IF/ICC	1:50 - 1:200
IP	1:20 - 1:50

Immunogen Information

Gene ID

54474

Swiss Prot

P35900

Immunogen

Recombinant protein of human Cytokeratin 20 (Cytokeratin 20 (KRT20))

Synonyms

K20; CD20; CK20; CK-20; KRT21; Cytokeratin 20 (KRT20)

Contact



www.abclonal.com

Product Information

Source

Rabbit

Isotype

IgG

Purification

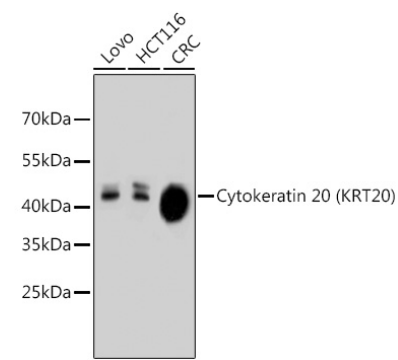
Affinity purification

Storage

Store at -20°C. Avoid freeze / thaw cycles.

Buffer: PBS with 0.02% sodium azide, 50% glycerol, pH 7.3.

Validation Data



Western blot analysis of extracts of various cell lines, using Cytokeratin 20 (Cytokeratin 20 (KRT20)) antibody (A11401).
Secondary antibody: HRP Goat Anti-Rabbit IgG (H+L) (AS014) at 1:10000 dilution.
Lysates/proteins: 25µg per lane.
Blocking buffer: 3% nonfat dry milk in TBST.