

A11202

Leader in Biomolecular Solutions for Life Science



## NF-kB p65/RelA Rabbit pAb

Catalog No.: A11202

4 Publications

### Basic Information

#### Observed MW

65kDa

#### Calculated MW

60kDa

#### Category

Polyclonal Antibody

#### Applications

WB, IHC-P, IF/ICC, ELISA

#### Cross-Reactivity

Human, Mouse, Rat

### Background

NF-kappa-B is a ubiquitous transcription factor involved in several biological processes. It is held in the cytoplasm in an inactive state by specific inhibitors. Upon degradation of the inhibitor, NF-kappa-B moves to the nucleus and activates transcription of specific genes. NF-kappa-B is composed of NFKB1 or NFKB2 bound to either REL, RELA, or RELB. The most abundant form of NF-kappa-B is NFKB1 complexed with the product of this gene, RELA. Four transcript variants encoding different isoforms have been found for this gene.

### Recommended Dilutions

WB	1:500 - 1:1000
IHC-P	1:50 - 1:200
IF/ICC	1:50 - 1:200

### Immunogen Information

#### Gene ID

5970

#### Swiss Prot

Q04206

#### Immunogen

A synthetic peptide corresponding to a sequence within amino acids 450-551 of human NF-kB p65/RelA (NP\_068810.3).

#### Synonyms

p65; CMCU; NFKB3; AIF3BL3; NF-kB p65/RelA

### Contact



[www.abclonal.com](http://www.abclonal.com)

### Product Information

#### Source

Rabbit

#### Isotype

IgG

#### Purification

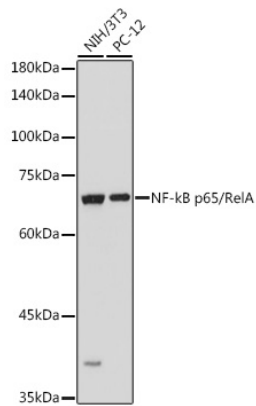
Affinity purification

#### Storage

Store at -20°C. Avoid freeze / thaw cycles.

Buffer: PBS with 0.01% thimerosal, 50% glycerol, pH7.3.

## Validation Data



Western blot analysis of extracts of various cell lines, using NF-kB p65/RelA antibody (A11202) at 1:1000 dilution.

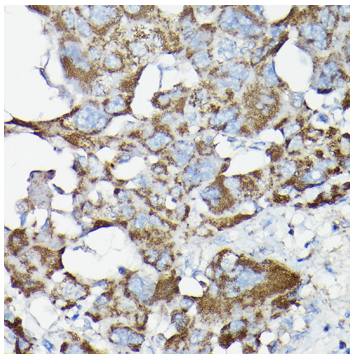
Secondary antibody: HRP Goat Anti-Rabbit IgG (H+L) (AS014) at 1:10000 dilution.

Lysates/proteins: 25µg per lane.

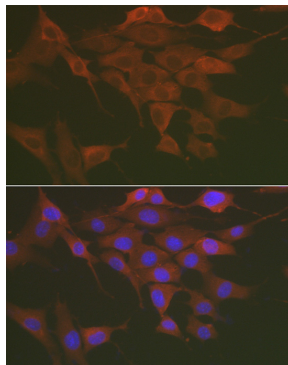
Blocking buffer: 3% nonfat dry milk in TBST.

Detection: ECL Basic Kit (RM00020).

Exposure time: 1s.



Immunohistochemistry analysis of paraffin-embedded human liver cancer using NF-kB p65/RelA Rabbit pAb (A11202) at dilution of 1:200 (40x lens). Perform high pressure antigen retrieval with 10 mM citrate buffer pH 6.0 before commencing with IHC staining protocol.



Immunofluorescence analysis of NIH/3T3 cells using NF-kB p65/RelA Rabbit pAb (A11202) at dilution of 1:100 (40x lens). Blue: DAPI for nuclear staining.