

# MEK1/MEK2 Rabbit mAb

Catalog No.: A11122

Recombinant

2 Publications

## Basic Information

### Observed MW

44kDa

### Calculated MW

40kDa/43kDa/44kDa

### Category

Primary antibody

### Applications

ELISA, WB, IHC-P, IF/ICC, IP

### Cross-Reactivity

Human, Mouse, Rat

## Background

The protein encoded by this gene is a member of the dual specificity protein kinase family, which acts as a mitogen-activated protein (MAP) kinase kinase. MAP kinases, also known as extracellular signal-regulated kinases (ERKs), act as an integration point for multiple biochemical signals. This protein kinase lies upstream of MAP kinases and stimulates the enzymatic activity of MAP kinases upon wide variety of extra- and intracellular signals. As an essential component of MAP kinase signal transduction pathway, this kinase is involved in many cellular processes such as proliferation, differentiation, transcription regulation and development. [provided by RefSeq, Jul 2008]

## Recommended Dilutions

WB	1:500 - 1:3000
IHC-P	1:50 - 1:200
IF/ICC	1:100 - 1:500
IP	1:50 - 1:100

## Immunogen Information

### Gene ID

5604/5605

### Swiss Prot

Q02750/P36507

### Immunogen

Recombinant protein of human MAP2K2

### Synonyms

MEK1/MEK2

## Contact

 | [www.abclonal.com](http://www.abclonal.com)

## Product Information

### Source

Rabbit

### Isotype

IgG

### Purification

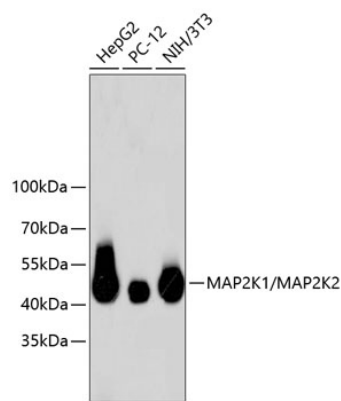
Affinity purification

### Storage

Store at -20°C. Avoid freeze / thaw cycles.

Buffer: PBS with 0.02% sodium azide, 50% glycerol, pH7.3.

# Validation Data



Western blot analysis of extracts of various cell lines, using MAP2K1/MAP2K2 antibody (A11122).  
Secondary antibody: HRP Goat Anti-Rabbit IgG (H+L) (AS014) at 1:10000 dilution.  
Lysates/proteins: 25µg per lane.  
Blocking buffer: 3% nonfat dry milk in TBST.