

IRF3 Rabbit pAb

Catalog No.: A11118 **12 Publications**

Basic Information

Observed MW

47kDa

Calculated MW

47kDa

Category

Primary antibody

Applications

ELISA, WB, IHC-P, IF/ICC, ChIP, IP

Cross-Reactivity

Human, Mouse, Rat

Background

This gene encodes a member of the interferon regulatory transcription factor (IRF) family. The encoded protein is found in an inactive cytoplasmic form that upon serine/threonine phosphorylation forms a complex with CREBBP. This complex translocates to the nucleus and activates the transcription of interferons alpha and beta, as well as other interferon-induced genes. The protein plays an important role in the innate immune response against DNA and RNA viruses. Mutations in this gene are associated with Encephalopathy, acute, infection-induced, herpes-specific, 7.

Recommended Dilutions

WB 1:1000 - 1:5000**IHC-P** 1:50 - 1:200**IF/ICC** 1:50 - 1:200**ChIP** 5µg antibody for
10µg-15µg of
Chromatin**IP** 0.5µg-4µg antibody for
200µg-400µg extracts of
whole cells

Immunogen Information

Gene ID

3661

Swiss Prot

Q14653

Immunogen

Recombinant fusion protein containing a sequence corresponding to amino acids 100-200 of human IRF3 (NP_001184051.1).

Synonyms

IIAE7; IRF3

Product Information

Source

Rabbit

Isotype

IgG

Purification

Affinity purification

Storage

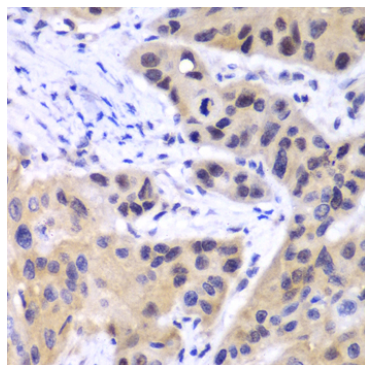
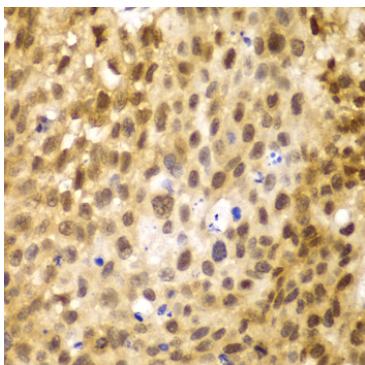
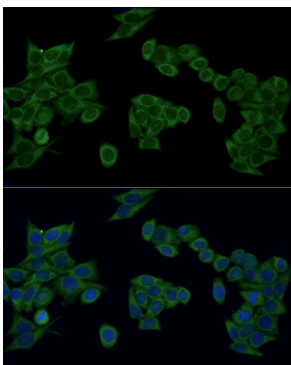
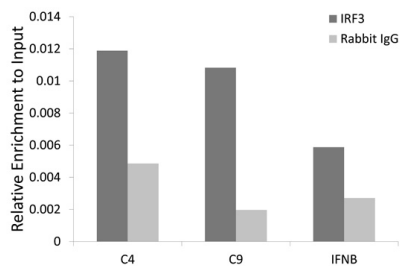
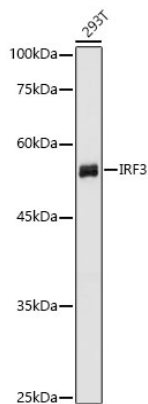
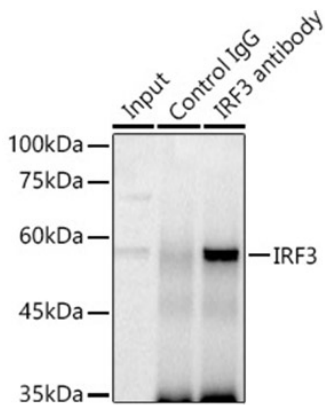
Store at -20°C. Avoid freeze / thaw cycles.

Buffer: PBS with 0.01% thimerosal, 50% glycerol, pH7.3.

Contact

 | www.abclonal.com

Validation Data



Validation Data

Immunofluorescence analysis of HeLa cells using IRF3 Rabbit pAb (A11118) at dilution of 1:100 (40x lens). Secondary antibody: ABflo® 488-conjugated Goat Anti-Rabbit IgG (H+L) (AS073) at 1:500 dilution. Blue: DAPI for nuclear staining.

Immunohistochemistry analysis of IRF3 in paraffin-embedded human lung cancer using IRF3 Rabbit pAb (A11118) at dilution of 1:100 (40x lens).Perform microwave antigen retrieval with 10 mM PBS buffer pH 7.2 before commencing with IHC staining protocol.

Immunohistochemistry analysis of IRF3 in paraffin-embedded human esophageal cancer using IRF3 Rabbit pAb (A11118) at dilution of 1:100 (40x lens).Perform microwave antigen retrieval with 10 mM PBS buffer pH 7.2 before commencing with IHC staining protocol.