

A11023

Leader in Biomolecular Solutions for Life Science



MMP14/MT1-MMP Rabbit mAb

Catalog No.: A11023

Recombinant

Basic Information

Observed MW

66kDa

Calculated MW

66kDa

Category

SMab Recombinant Monoclonal Antibody

Applications

WB, IHC-P, IF/ICC, IP, ELISA

Cross-Reactivity

Human, Mouse, Rat

Background

Proteins of the matrix metalloproteinase (MMP) family are involved in the breakdown of extracellular matrix in normal physiological processes, such as embryonic development, reproduction, and tissue remodeling, as well as in disease processes, such as arthritis and metastasis. Most MMP's are secreted as inactive proproteins which are activated when cleaved by extracellular proteinases. However, the protein encoded by this gene is a member of the membrane-type MMP (MT-MMP) subfamily; each member of this subfamily contains a potential transmembrane domain suggesting that these proteins are expressed at the cell surface rather than secreted. This protein activates MMP2 protein, and this activity may be involved in tumor invasion.

Recommended Dilutions

WB	1:500 - 1:2000
IHC-P	1:50 - 1:200
IF/ICC	1:50 - 1:200
IP	1:20 - 1:50

Immunogen Information

Gene ID

4323

Swiss Prot

P50281

Immunogen

Recombinant protein of human MMP14/MMP14/MT1-MMP

Synonyms

MMP-14; MMP-X1; MT-MMP; MT1MMP; MTMMP1; WNCHRS; MT1-MMP; MT-MMP 1; MMP14/MT1-MMP

Contact



www.abclonal.com

Product Information

Source

Rabbit

Isotype

IgG

Purification

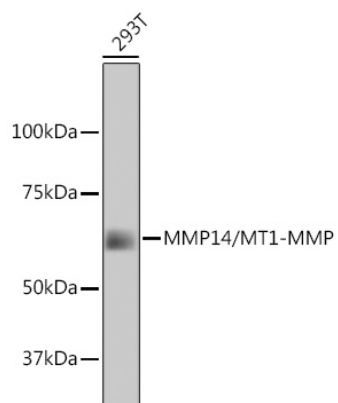
Affinity purification

Storage

Store at -20°C. Avoid freeze / thaw cycles.

Buffer: PBS with 0.02% sodium azide, 50% glycerol, pH 7.3.

Validation Data



Western blot analysis of extracts of 293T cells, using MMP14/MMP14/MT1-MMP antibody (A11023).
Secondary antibody: HRP Goat Anti-Rabbit IgG (H+L) (AS014) at 1:10000 dilution.
Lysates/proteins: 25µg per lane.
Blocking buffer: 3% nonfat dry milk in TBST.