

A10972

Leader in Biomolecular Solutions for Life Science



# Lysozyme (LYZ) Rabbit mAb

Catalog No.: A10972

Recombinant

## Basic Information

### Observed MW

15kDa

### Calculated MW

17kDa

### Category

SMab Recombinant Monoclonal Antibody

### Applications

WB, IHC-P, IF/ICC, ELISA

### Cross-Reactivity

Human, Mouse, Rat

### CloneNo number

ARC57153

## Background

This gene encodes human lysozyme, whose natural substrate is the bacterial cell wall peptidoglycan (cleaving the beta[1-4]glycosidic linkages between N-acetylmuramic acid and N-acetylglucosamine). Lysozyme is one of the antimicrobial agents found in human milk, and is also present in spleen, lung, kidney, white blood cells, plasma, saliva, and tears. The protein has antibacterial activity against a number of bacterial species. Missense mutations in this gene have been identified in heritable renal amyloidosis.

## Recommended Dilutions

WB	1:2000 - 1:20000
IHC-P	1:1000 - 1:5000
IF/ICC	1:100 - 1:500

## Immunogen Information

### Gene ID

4069

### Swiss Prot

P61626

### Immunogen

A synthetic peptide corresponding to a sequence within amino acids 1-100 of human Lysozyme (LYZ) (NP\_000230.1).

### Synonyms

LZM; LYZF1; Lysozyme (LYZ)

## Contact



[www.abclonal.com](http://www.abclonal.com)

## Product Information

### Source

Rabbit

### Isotype

IgG

### Purification

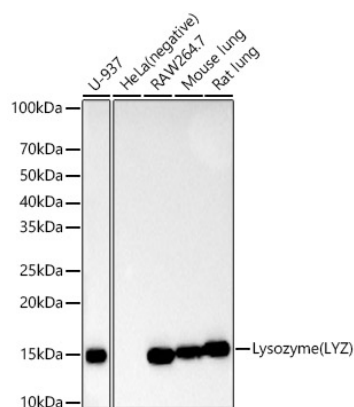
Affinity purification

### Storage

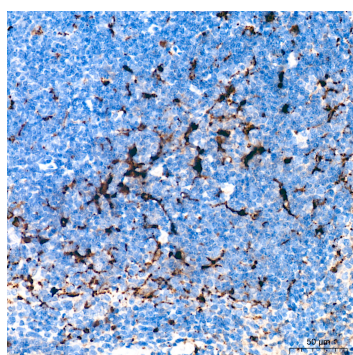
Store at -20°C. Avoid freeze / thaw cycles.

Buffer: PBS with 0.05% proclin300, 0.05% BSA, 50% glycerol, pH7.3.

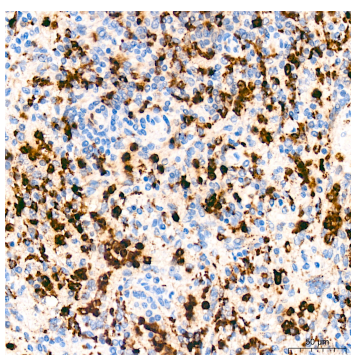
## Validation Data



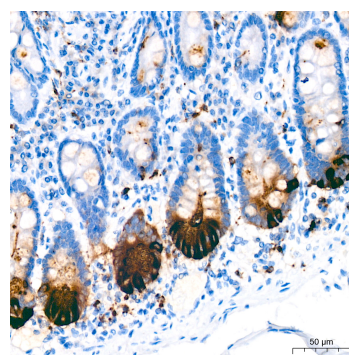
Western blot analysis of various lysates, using Lysozyme (LYZ) Rabbit mAb (A10972) at 1:20000 dilution. Secondary antibody: HRP Goat Anti-Rabbit IgG (H+L) (AS014) at 1:10000 dilution. Lysates/proteins: 25µg per lane. Blocking buffer: 3% nonfat dry milk in TBST. Detection: ECL Basic Kit (RM00020). Exposure time: 90s.



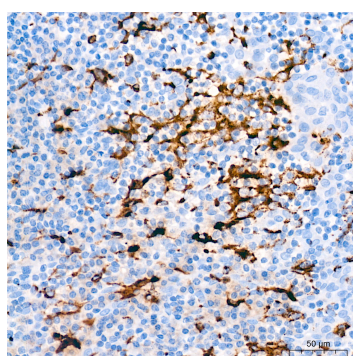
Immunohistochemistry analysis of Lysozyme (LYZ) in paraffin-embedded mouse spleen tissue using Lysozyme (LYZ) Rabbit mAb (A10972) at a dilution of 1:4000 (40x lens). High pressure antigen retrieval was performed with 0.01 M citrate buffer (pH 6.0) prior to IHC staining.



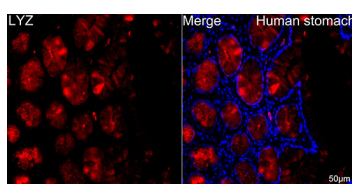
Immunohistochemistry analysis of Lysozyme (LYZ) in paraffin-embedded human spleen tissue using Lysozyme (LYZ) Rabbit mAb (A10972) at a dilution of 1:4000 (40x lens). High pressure antigen retrieval was performed with 0.01 M citrate buffer (pH 6.0) prior to IHC staining.



Immunohistochemistry analysis of Lysozyme (LYZ) in paraffin-embedded human colon tissue using Lysozyme (LYZ) Rabbit mAb (A10972) at a dilution of 1:4000 (40x lens). High pressure antigen retrieval was performed with 0.01 M citrate buffer (pH 6.0) prior to IHC staining.



Immunohistochemistry analysis of Lysozyme (LYZ) in paraffin-embedded human tonsil tissue using Lysozyme (LYZ) Rabbit mAb (A10972) at a dilution of 1:4000 (40x lens). High pressure antigen retrieval was performed with 0.01 M citrate buffer (pH 6.0) prior to IHC staining.



Immunofluorescence analysis of paraffin-embedded Human stomach using Lysozyme (LYZ) Rabbit mAb (A10972) at a dilution of 1:400 (40x lens). Secondary antibody: Cy3 Goat Anti-Rabbit IgG (H+L) (AS007) at 1:500 dilution. Blue: DAPI for nuclear staining.