

A10799

Leader in Biomolecular Solutions for Life Science



## SR-BI Rabbit mAb

Catalog No.: A10799

Recombinant

1 Publications

### Basic Information

#### Observed MW

78kDa

#### Calculated MW

61kDa

#### Category

SMab Recombinant Monoclonal Antibody

#### Applications

WB, IHC-P, ELISA

#### Cross-Reactivity

Human, Mouse, Rat

### Background

The protein encoded by this gene is a plasma membrane receptor for high density lipoprotein cholesterol (HDL). The encoded protein mediates cholesterol transfer to and from HDL. In addition, this protein is a receptor for hepatitis C virus glycoprotein E2 and facilitates cell entry by the virus, SARS-CoV2.

### Recommended Dilutions

WB	1:500 - 1:2000
IHC-P	1:50 - 1:200

### Immunogen Information

#### Gene ID

949

#### Swiss Prot

Q8WTV0

#### Immunogen

Recombinant protein of human SR-BI

#### Synonyms

CLA1; SRB1; CLA-1; SR-BI; CD36L1; HDLCQ6; HDLQTL6

### Contact



[www.abclonal.com](http://www.abclonal.com)

### Product Information

#### Source

Rabbit

#### Isotype

IgG

#### Purification

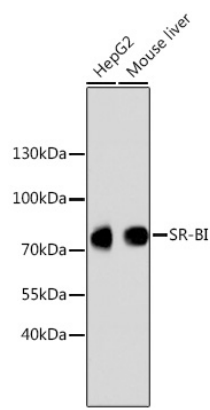
Affinity purification

#### Storage

Store at -20°C. Avoid freeze / thaw cycles.

Buffer: PBS with 0.02% sodium azide, 50% glycerol, pH 7.3.

# Validation Data



Western blot analysis of extracts of various cell lines, using SR-BI antibody (A10799).  
Secondary antibody: HRP Goat Anti-Rabbit IgG (H+L) (A5014) at 1:10000 dilution.  
Lysates/proteins: 25µg per lane.  
Blocking buffer: 3% nonfat dry milk in TBST.