

Glutathione Synthetase (GSS) Rabbit pAb

Catalog No.: A1069

Basic Information

Observed MW

53kDa

Calculated MW

52kDa

Category

Primary antibody

Applications

ELISA, WB, IF/ICC

Cross-Reactivity

Human, Mouse, Rat

Background

Glutathione is important for a variety of biological functions, including protection of cells from oxidative damage by free radicals, detoxification of xenobiotics, and membrane transport. The protein encoded by this gene functions as a homodimer to catalyze the second step of glutathione biosynthesis, which is the ATP-dependent conversion of gamma-L-glutamyl-L-cysteine to glutathione. Defects in this gene are a cause of glutathione synthetase deficiency.

Recommended Dilutions

WB	1:500 - 1:1000
IF/ICC	1:50 - 1:200

Immunogen Information

Gene ID	Swiss Prot
2937	P48637

Immunogen

Recombinant fusion protein containing a sequence corresponding to amino acids 250-474 of human Glutathione Synthetase (GSS) (NP_000169.1).

Synonyms

GSHS; HEL-S-64p; HEL-S-88n; Glutathione Synthetase (GSS)

Contact

 | www.abclonal.com

Product Information

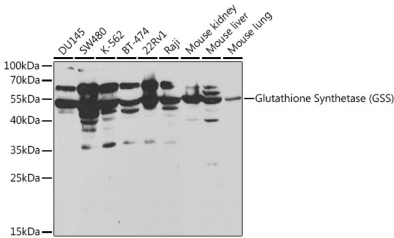
Source	Isotype	Purification
Rabbit	IgG	Affinity purification

Storage

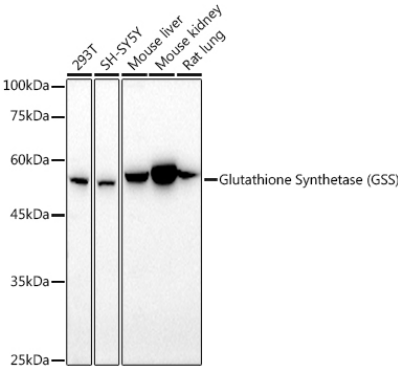
Store at -20°C. Avoid freeze / thaw cycles.

Buffer: PBS with 0.05% proclin300, 50% glycerol, pH7.3.

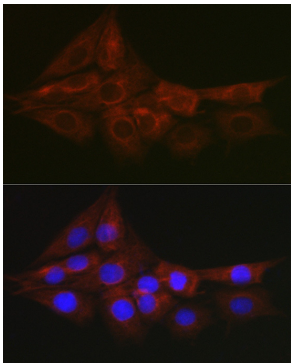
Validation Data



Western blot analysis of extracts of various cell lines, using Glutathione Synthetase (Glutathione Synthetase (GSS)) antibody (A1069) at 1:1000 dilution.
Secondary antibody: HRP Goat Anti-Rabbit IgG (H+L) (AS014) at 1:10000 dilution.
Lysates/proteins: 25µg per lane.
Blocking buffer: 3% nonfat dry milk in TBST.



Western blot analysis of extracts of various cell lines, using Glutathione Synthetase (GSS) antibody (A1069) at 1:1000 dilution.
Secondary antibody: HRP Goat Anti-Rabbit IgG (H+L) (AS014) at 1:10000 dilution.
Lysates/proteins: 25µg per lane.
Blocking buffer: 3% nonfat dry milk in TBST.
Detection: ECL Basic Kit (RM00020).
Exposure time: 60s.



Immunofluorescence analysis of PC-12 cells using Glutathione Synthetase (GSS) antibody (A1069) at dilution of 1:150. Blue: DAPI for nuclear staining.