

## MAPK1/MAPK3 Monoclonal Antibody

<b>Catalog No</b>	A10613	<b>Category</b>	Monoclonal Antibodies
<b>Applications</b>	WB,IHC	<b>Observed MW</b>	41kDa
<b>Cross-Reactivity</b>	Human,Mouse,Rat	<b>Calculated MW</b>	36kDa/41kDa/38kDa/40kDa/43kDa

### Immunogen Information

<b>Immunogen</b>	A synthetic peptide of human MAPK1/MAPK3
<b>Gene ID</b>	5594/5595
<b>Swiss Prot</b>	P28482/P27361
<b>Synonyms</b>	

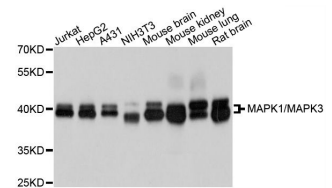
### Product information

<b>Source</b>	Mouse
<b>Isotype</b>	IgG
<b>Purity</b>	Affinity purification
<b>Storage</b>	Store at -20°C. Avoid freeze / thaw cycles. Buffer: PBS with 0.02% sodium azide, 50% glycerol, pH7.3.

### Background

### Recommended Dilutions

WB	1:1000 - 1:2000
IHC	1:50 - 1:200



Western blot analysis of extracts of various cell lines, using MAPK1/MAPK3 antibody (A10613) at 1:1000 dilution.  
 Secondary antibody: HRP Goat Anti-Mouse IgG (H+L) (AS003) at 1:10000 dilution.  
 Lysates/proteins: 25ug per lane.  
 Blocking buffer: 3% nonfat dry milk in TBST.  
 Detection: ECL Basic Kit (RM00020).  
 Exposure time: 5s.