

A10611

Leader in Biomolecular Solutions for Life Science



# γ-Tubulin

Catalog No.: A10611

## Basic Information

### Observed MW

51kDa

### Calculated MW

51kDa

### Category

SMab Recombinant Monoclonal Antibody

### Applications

WB, IHC-P

### Cross-Reactivity

Human, Mouse, Rat

## Background

This gene encodes a member of the tubulin superfamily. The encoded protein localizes to the centrosome where it binds to microtubules as part of a complex referred to as the gamma-tubulin ring complex. The protein mediates microtubule nucleation and is required for microtubule formation and progression of the cell cycle. A pseudogene of this gene is found on chromosome 7.

## Recommended Dilutions

WB 1:1000 - 1:2000

IHC-P 1:50 - 1:200

## Immunogen Information

### Gene ID

7283

### Swiss Prot

P23258

### Immunogen

A synthetic peptide of human TUBG1

### Synonyms

TUBG; GCP-1; CDCBM4; TUBGCP1

## Contact



[www.abclonal.com](http://www.abclonal.com)

## Product Information

### Source

Mouse

### Isotype

IgG

### Purification

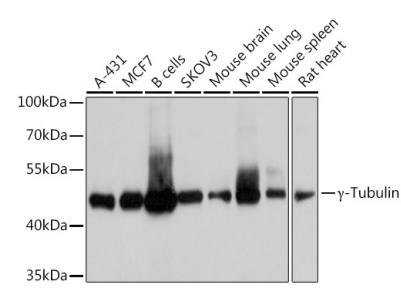
Affinity purification

### Storage

Store at -20°C. Avoid freeze / thaw cycles.

Buffer: PBS with 0.02% sodium azide, 50% glycerol, pH 7.3.

# Validation Data



Western blot analysis of various lysates using  $\gamma$ -Tubulin (A10611) at 1:1000 dilution.  
Secondary antibody: HRP Goat Anti-Mouse IgG (H+L) (AS003) at 1:10000 dilution.  
Lysates/proteins: 25 $\mu$ g per lane.  
Blocking buffer: 3% nonfat dry milk in TBST.  
Detection: ECL Basic Kit (RM00020).  
Exposure time: 5s.