

A10598

Leader in Biomolecular Solutions for Life Science



WDFY2 Rabbit pAb

Catalog No.: A10598

Basic Information

Observed MW

45kDa

Calculated MW

45kDa

Category

Polyclonal Antibody

Applications

WB, ELISA

Cross-Reactivity

Human, Mouse, Rat

Background

This gene encodes a protein that contains two WD domains and an FYVE zinc finger region. The function of this gene is unknown. An alternatively spliced transcript variant of this gene may exist.

Recommended Dilutions

WB 1:500 - 1:2000

Immunogen Information

Gene ID

115825

Swiss Prot

Q96P53

Immunogen

Recombinant fusion protein containing a sequence corresponding to amino acids 1-200 of human WDFY2 (NP_443182.1).

Synonyms

PROF; WDF2; ZFYVE22; WDFY2

Contact



www.abclonal.com

Product Information

Source

Rabbit

Isotype

IgG

Purification

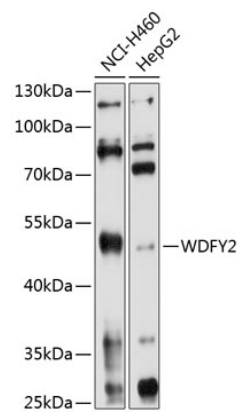
Affinity purification

Storage

Store at -20°C. Avoid freeze / thaw cycles.

Buffer: PBS with 0.02% sodium azide, 50% glycerol, pH7.3.

Validation Data



Western blot analysis of various lysates using WDFY2 Rabbit pAb (A10598) at 1:1000 dilution.
Secondary antibody: HRP Goat Anti-Rabbit IgG (H+L) (AS014) at 1:10000 dilution.
Lysates/proteins: 25µg per lane.
Blocking buffer: 3% nonfat dry milk in TBST.
Detection: ECL Basic Kit (RM00020).
Exposure time: 30s.