

A10553

Leader in Biomolecular Solutions for Life Science



## GPSM2 Rabbit pAb

Catalog No.: A10553

### Basic Information

**Observed MW**

76kDa

**Calculated MW**

77kDa

**Category**

Polyclonal Antibody

**Applications**

WB, ELISA

**Cross-Reactivity**

Human, Mouse

### Background

The protein encoded by this gene belongs to a family of proteins that modulate activation of G proteins, which transduce extracellular signals received by cell surface receptors into integrated cellular responses. The N-terminal half of this protein contains 10 copies of leu-gly-asn (LGN) repeat, and the C-terminal half contains 4 GoLoco motifs, which are involved in guanine nucleotide exchange. This protein may play a role in neuroblast division and in the development of normal hearing. Mutations in this gene are associated with autosomal recessive nonsyndromic deafness (DFNB82). Alternative splicing results in multiple transcript variants.

### Recommended Dilutions

WB 1:1000 - 1:2000

### Immunogen Information

**Gene ID**

29899

**Swiss Prot**

P81274

**Immunogen**

Recombinant fusion protein containing a sequence corresponding to amino acids 380-490 of human GPSM2 (NP\_037428.3).

**Synonyms**

LGN; CMCS; PINS; DFNB82; GPSM2

### Contact



[www.abclonal.com](http://www.abclonal.com)

### Product Information

**Source**

Rabbit

**Isotype**

IgG

**Purification**

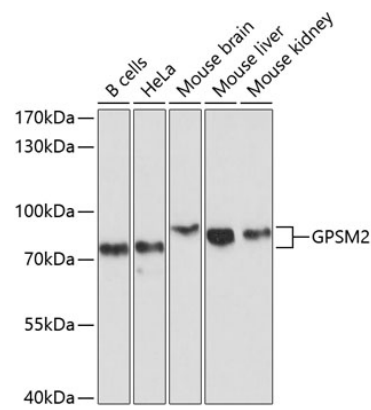
Affinity purification

**Storage**

Store at -20°C. Avoid freeze / thaw cycles.

Buffer: PBS with 0.01% thimerosal, 50% glycerol, pH 7.3.

Validation Data



Western blot analysis of various lysates using GPSM2 Rabbit pAb (A10553) at 1:1000 dilution.  
Secondary antibody: HRP Goat Anti-Rabbit IgG (H+L) (AS014) at 1:10000 dilution.  
Lysates/proteins: 25µg per lane.  
Blocking buffer: 3% nonfat dry milk in TBST.  
Detection: ECL Basic Kit (RM00020).  
Exposure time: 10s.