

A10550

Leader in Biomolecular Solutions for Life Science



## GIPC1 Rabbit pAb

Catalog No.: A10550

### Basic Information

**Observed MW**

40kDa

**Calculated MW**

36kDa

**Category**

Polyclonal Antibody

**Applications**

WB, ELISA

**Cross-Reactivity**

Human, Mouse, Rat

### Background

GIPC1 is a scaffolding protein that regulates cell surface receptor expression and trafficking (Lee et al., 2008 [PubMed 18775991]).

### Recommended Dilutions

WB 1:1000 - 1:2000

### Immunogen Information

**Gene ID**

10755

**Swiss Prot**

O14908

**Immunogen**

Recombinant fusion protein containing a sequence corresponding to amino acids 1-333 of human GIPC1 (NP\_005707.1).

**Synonyms**

NIP; GIPC; IIP-1; OPDM2; TIP-2; SEMCAP; C19orf3; Hs.6454; GLUT1CBP; RGS19IP1; SYNECTIN; SYNECTIIN; GIPC1

### Contact



[www.abclonal.com](http://www.abclonal.com)

### Product Information

**Source**

Rabbit

**Isotype**

IgG

**Purification**

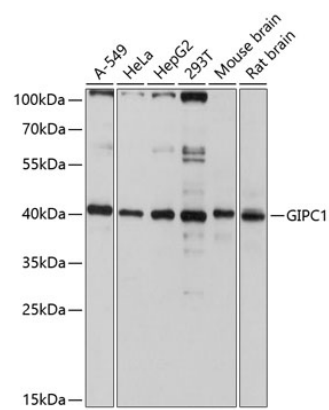
Affinity purification

**Storage**

Store at -20°C. Avoid freeze / thaw cycles.

Buffer: PBS with 0.01% thimerosal, 50% glycerol, pH 7.3.

# Validation Data



Western blot analysis of various lysates using GIPC1 Rabbit pAb (A10550) at 1:3000 dilution.  
Secondary antibody: HRP Goat Anti-Rabbit IgG (H+L) (AS014) at 1:10000 dilution.  
Lysates/proteins: 25µg per lane.  
Blocking buffer: 3% nonfat dry milk in TBST.  
Detection: ECL Basic Kit (RM00020).  
Exposure time: 10s.