

A10545

Leader in Biomolecular Solutions for Life Science



LGR5/GPR49 Rabbit pAb

Catalog No.: A10545

9 Publications

Basic Information

Observed MW

100kDa

Calculated MW

100kDa

Category

Polyclonal Antibody

Applications

WB, IHC-P, ELISA

Cross-Reactivity

Mouse, Rat

Background

The protein encoded by this gene is a leucine-rich repeat-containing receptor (LGR) and member of the G protein-coupled, 7-transmembrane receptor (GPCR) superfamily. The encoded protein is a receptor for R-spondins and is involved in the canonical Wnt signaling pathway. This protein plays a role in the formation and maintenance of adult intestinal stem cells during postembryonic development. Several transcript variants encoding different isoforms have been found for this gene.

Recommended Dilutions

WB	1:1000 - 1:5000
IHC-P	1:100 - 1:500

Immunogen Information

Gene ID

8549

Swiss Prot

O75473

Immunogen

Recombinant fusion protein containing a sequence corresponding to amino acids 824-907 of human LGR5/GPR49 (NP_003658.1).

Synonyms

FEX; HG38; GPR49; GPR67; GRP49; LGR5/GPR49

Contact



www.abclonal.com

Product Information

Source

Rabbit

Isotype

IgG

Purification

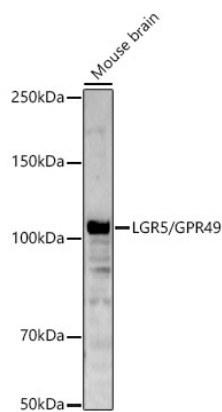
Affinity purification

Storage

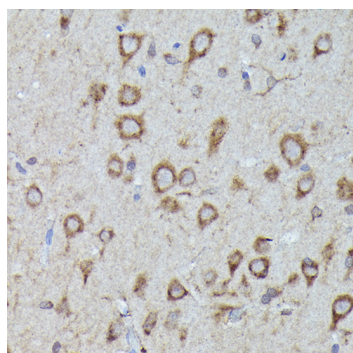
Store at -20°C. Avoid freeze / thaw cycles.

Buffer: PBS with 0.01% thimerosal, 50% glycerol, pH7.3.

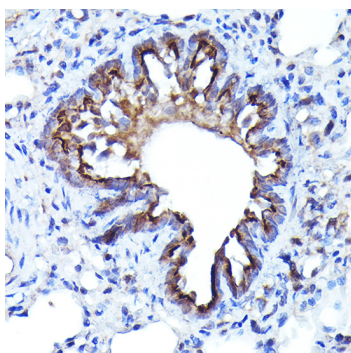
Validation Data



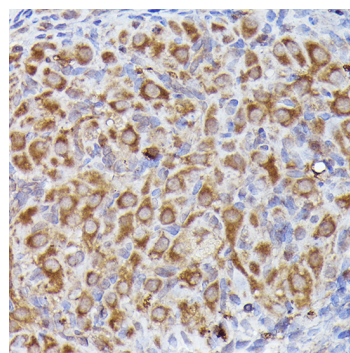
Western blot analysis of lysates from Mouse brain using LGR5/GPR49 Rabbit pAb(A10545) at 1:2000 dilution.
Secondary antibody:HRP Goat Anti-Rabbit IgG (H+L)(A5014) at 1:10000 dilution.
Lysates/proteins: 25 µg per lane.
Blocking buffer: 3% nonfat dry milk in TBST.
Detection:ECL Basic Kit (RM00020).
Exposure time:60s.



Immunohistochemistry analysis of LGR5/GPR49 in paraffin-embedded rat brain using LGR5/GPR49 Rabbit pAb (A10545) at dilution of 1:300 (40x lens). Perform high pressure antigen retrieval with 10 mM citrate buffer pH 6.0 before commencing with IHC staining protocol.



Immunohistochemistry analysis of LGR5/GPR49 in paraffin-embedded rat lung using LGR5/GPR49 Rabbit pAb (A10545) at dilution of 1:300 (40x lens). Perform high pressure antigen retrieval with 10 mM citrate buffer pH 6.0 before commencing with IHC staining protocol.



Immunohistochemistry analysis of LGR5/GPR49 in paraffin-embedded rat ovary using LGR5/GPR49 Rabbit pAb (A10545) at dilution of 1:300 (40x lens). Perform high pressure antigen retrieval with 10 mM citrate buffer pH 6.0 before commencing with IHC staining protocol.