

A10303

Leader in Biomolecular Solutions for Life Science



## RXFP3 Rabbit pAb

Catalog No.: A10303

### Basic Information

**Observed MW**

60kDa

**Calculated MW**

51kDa

**Category**

Polyclonal Antibody

**Applications**

WB, ELISA

**Cross-Reactivity**

Human, Mouse, Rat

### Background

Predicted to enable G protein-coupled peptide receptor activity. Involved in positive regulation of cytokinesis. Predicted to be located in plasma membrane. Predicted to be integral component of plasma membrane.

### Recommended Dilutions

WB 1:1000 - 1:2000

### Immunogen Information

**Gene ID**

51289

**Swiss Prot**

Q9NSD7

**Immunogen**

Recombinant fusion protein containing a sequence corresponding to amino acids 1-80 of human RXFP3 (NP\_057652.1).

**Synonyms**

SALPR; RLN3R1; RXFPR3; GPCR135; RXFP3

### Contact



[www.abclonal.com](http://www.abclonal.com)

### Product Information

**Source**

Rabbit

**Isotype**

IgG

**Purification**

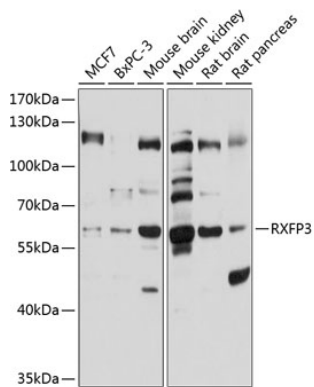
Affinity purification

**Storage**

Store at -20°C. Avoid freeze / thaw cycles.

Buffer: PBS with 0.02% sodium azide, 50% glycerol, pH 7.3.

Validation Data



Western blot analysis of various lysates using RXFP3 Rabbit pAb (A10303) at 1:1000 dilution.  
Secondary antibody: HRP Goat Anti-Rabbit IgG (H+L) (A5014) at 1:10000 dilution.  
Lysates/proteins: 25µg per lane.  
Blocking buffer: 3% nonfat dry milk in TBST.  
Detection: ECL Basic Kit (RM00020).  
Exposure time: 20s.