

A10248

Leader in Biomolecular Solutions for Life Science



# SMARCA1 Rabbit pAb

Catalog No.: A10248

## Basic Information

### Observed MW

140kDa

### Calculated MW

123kDa

### Category

Mouse Monoclonal Antibody

### Applications

WB, IHC-P, IF/ICC, IP, ELISA

### Cross-Reactivity

Human, Mouse, Rat

## Background

This gene encodes a member of the SWI/SNF family of proteins. The encoded protein is an ATPase which is expressed in diverse tissues and contributes to the chromatin remodeling complex that is involved in transcription. The protein may also play a role in DNA damage, growth inhibition and apoptosis of cancer cells. Alternative splicing results in multiple transcript variants.

## Recommended Dilutions

WB	1:1000 - 1:2000
IHC-P	1:50 - 1:200
IF/ICC	1:50 - 1:200
IP	0.5µg-4µg antibody for 200µg-400µg extracts of whole cells

## Immunogen Information

### Gene ID

6594

### Swiss Prot

P28370

### Immunogen

Recombinant fusion protein containing a sequence corresponding to amino acids 1-200 of human SMARCA1 (NP\_003060.2).

### Synonyms

SWI; ISWI; SWI2; SNF2L; SNF2L1; SNF2LB; SNF2LT; hSNF2L; NURF140; SMARCA1

## Contact



[www.abclonal.com](http://www.abclonal.com)

## Product Information

### Source

Rabbit

### Isotype

IgG

### Purification

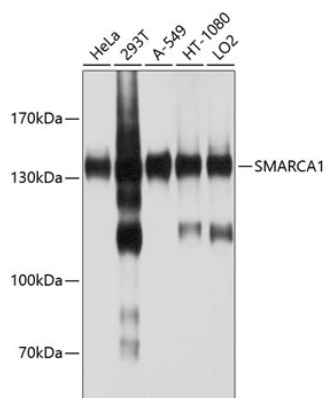
Affinity purification

### Storage

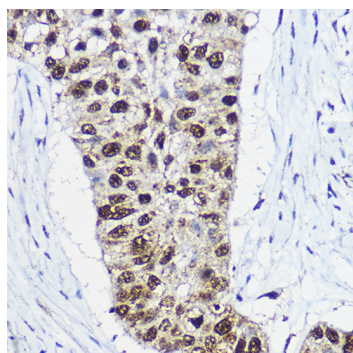
Store at -20°C. Avoid freeze / thaw cycles.

Buffer: PBS with 0.02% sodium azide, 50% glycerol, pH7.3.

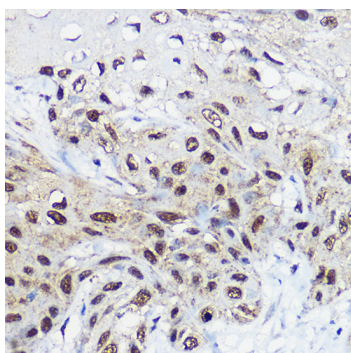
## Validation Data



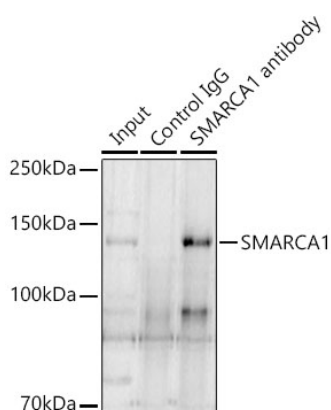
Western blot analysis of various lysates using SMARCA1 Rabbit pAb (A10248) at 1:1000 dilution.  
 Secondary antibody: HRP Goat Anti-Rabbit IgG (H+L) (A5014) at 1:10000 dilution.  
 Lysates/proteins: 25µg per lane.  
 Blocking buffer: 3% nonfat dry milk in TBST.  
 Detection: ECL Basic Kit (RM00020).  
 Exposure time: 15s.



Immunohistochemistry analysis of SMARCA1 in paraffin-embedded human lung cancer using SMARCA1 Rabbit pAb (A10248) at dilution of 1:100 (40x lens). Perform high pressure antigen retrieval with 10 mM citrate buffer pH 6.0 before commencing with IHC staining protocol.



Immunohistochemistry analysis of SMARCA1 in paraffin-embedded human esophageal cancer using SMARCA1 Rabbit pAb (A10248) at dilution of 1:100 (40x lens). Perform high pressure antigen retrieval with 10 mM citrate buffer pH 6.0 before commencing with IHC staining protocol.



Immunoprecipitation analysis of 300 µg extracts of A-431 cells using 3 µg SMARCA1 Rabbit pAb (A10248). Western blot was performed from the immunoprecipitate using SMARCA1 Rabbit pAb (A10248) at a dilution of 1:1000.