

MET Mouse mAb

Catalog No.: A10199

Basic Information

Observed MW

120kDa

Calculated MW

156kDa

Category

Primary antibody

Applications

ELISA, WB, IHC-P, IF/ICC

Cross-Reactivity

Human

Background

This gene encodes a member of the receptor tyrosine kinase family of proteins and the product of the proto-oncogene MET. The encoded preproprotein is proteolytically processed to generate alpha and beta subunits that are linked via disulfide bonds to form the mature receptor. Further processing of the beta subunit results in the formation of the M10 peptide, which has been shown to reduce lung fibrosis. Binding of its ligand, hepatocyte growth factor, induces dimerization and activation of the receptor, which plays a role in cellular survival, embryogenesis, and cellular migration and invasion. Mutations in this gene are associated with papillary renal cell carcinoma, hepatocellular carcinoma, and various head and neck cancers. Amplification and overexpression of this gene are also associated with multiple human cancers.

Recommended Dilutions

WB	1:500 - 1:1000
IHC-P	1:20 - 1:50
IF/ICC	1:20 - 1:50

Immunogen Information

Gene ID

4233

Swiss Prot

P08581

Immunogen

Recombinant protein of human MET

Synonyms

DA11; HGFR; AUTS9; RCCP2; c-Met; DFNB97; MET

Contact

 | www.abclonal.com

Product Information

Source

Mouse

Isotype

IgG

Purification

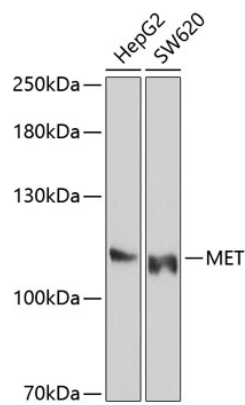
Affinity purification

Storage

Store at 4°C. Avoid freeze / thaw cycles.

Buffer: PBS with 0.02% sodium azide, pH 7.3.

Validation Data



Western blot analysis of various lysates using MET Mouse mAb (A10199) at 1:1000 dilution.
Secondary antibody: HRP Goat Anti-Mouse IgG (H+L) (AS003) at 1:10000 dilution.
Lysates/proteins: 25µg per lane.
Blocking buffer: 3% nonfat dry milk in TBST.
Detection: ECL Enhanced Kit (RM00021).
Exposure time: 30s.