

## COX4I1 Monoclonal Antibody

<b>Catalog No</b>	A10098	<b>Category</b>	Monoclonal Antibodies
<b>Applications</b>	WB,IHC,ICC,IP,FC	<b>Observed MW</b>	17kDa
<b>Cross-Reactivity</b>	Human,Mouse,Rat	<b>Calculated MW</b>	19kDa

### Immunogen Information

<b>Immunogen</b>	A synthetic peptide of human COX4I1
<b>Gene ID</b>	1327
<b>Swiss Prot</b>	P13073
<b>Synonyms</b>	COXIV-1,COX4,COX4-1,COXIV,COXIV-1

### Product information

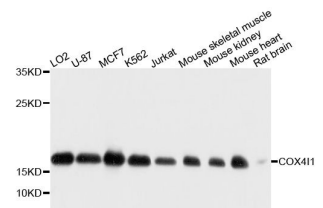
<b>Source</b>	Mouse
<b>Isotype</b>	IgG
<b>Purity</b>	Affinity purification
<b>Storage</b>	Store at -20°C. Avoid freeze / thaw cycles. Buffer: PBS with 0.02% sodium azide, 50% glycerol, pH7.3.

### Background

Cytochrome c oxidase (COX) is the terminal enzyme of the mitochondrial respiratory chain. It is a multi-subunit enzyme complex that couples the transfer of electrons from cytochrome c to molecular oxygen and contributes to a proton electrochemical gradient across the inner mitochondrial membrane. The complex consists of 13 mitochondrial- and nuclear-encoded subunits. The mitochondrially-encoded subunits perform the electron transfer and proton pumping activities. The functions of the nuclear-encoded subunits are unknown but they may play a role in the regulation and assembly of the complex. This gene encodes the nuclear-encoded subunit IV isoform 1 of the human mitochondrial respiratory chain enzyme. It is located at the 3' of the NOC4 (neighbor of COX4) gene in a head-to-head orientation, and shares a promoter with it. Pseudogenes related to this gene are located on chromosomes 13 and 14. Alternative splicing results in multiple transcript variants encoding different isoforms.

### Recommended Dilutions

WB	1:1000 - 1:4000
IHC	1:50 - 1:200
ICC	1:50 - 1:200
IP	1:20 - 1:50
FC	1:20 - 1:50



Western blot analysis of extracts of various cell lines, using COX4I1 antibody (A10098) at 1:1000 dilution. Secondary antibody: HRP Goat Anti-Mouse IgG (H+L) (AS003) at 1:10000 dilution.  
Lysates/proteins: 25ug per lane.  
Blocking buffer: 3% nonfat dry milk in TBST.  
Detection: ECL Basic Kit (RM00020).  
Exposure time: 30s.