

A0932

Leader in Biomolecular Solutions for Life Science



RPS6 Mouse mAb

Catalog No.: A0932

Basic Information

Observed MW

34kDa

Calculated MW

28kDa

Category

SMab Recombinant Monoclonal Antibody

Applications

WB,IHC-P,IF/ICC,FC,ELISA

Cross-Reactivity

Human,Mouse,Rat

Background

Predicted to enable protein kinase binding activity. Predicted to be a structural constituent of ribosome. Involved in glucose homeostasis. Acts upstream of or within several processes, including T cell activation; activation-induced cell death of T cells; and ribosome biogenesis. Located in dendrite; perinuclear region of cytoplasm; and ribosome. Part of cytosolic small ribosomal subunit and polysome. Is expressed in several structures, including early conceptus; forelimb; gonad; intestine epithelium; and salivary gland. Orthologous to human RPS6 (ribosomal protein S6).

Recommended Dilutions

WB	1:500 - 1:1000
IHC-P	1:50 - 1:200
IF/ICC	1:20 - 1:50
FC	1:20 - 1:50

Immunogen Information

Gene ID

20104

Swiss Prot

Immunogen

A synthetic peptide of mouse RPS6

Synonyms

S6R; RPS6

Contact



www.abclonal.com

Product Information

Source

Mouse

Isotype

IgG

Purification

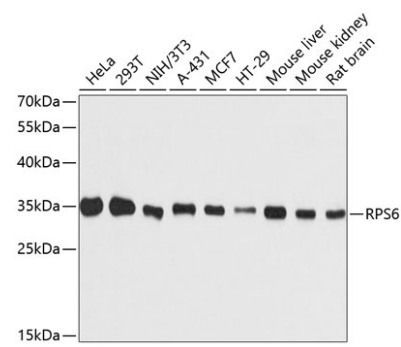
Affinity purification

Storage

Store at 4°C. Avoid freeze / thaw cycles.

Buffer: PBS with 0.02% sodium azide,pH7.3.

Validation Data



Western blot analysis of various lysates using RPS6 Mouse mAb (A0932) at 1:1000 dilution.
Secondary antibody: HRP Goat Anti-Mouse IgG (H+L) (AS003) at 1:10000 dilution.
Lysates/proteins: 25µg per lane.
Blocking buffer: 3% nonfat dry milk in TBST.
Detection: ECL Basic Kit (RM00020).
Exposure time: 30s.