

## TSC1 Monoclonal Antibody

<b>Catalog No</b>	A0721	<b>Category</b>	Monoclonal Antibodies
<b>Applications</b>	WB	<b>Observed MW</b>	140kDa
<b>Cross-Reactivity</b>	Human,Mouse	<b>Calculated MW</b>	124kDa/129kDa

### Immunogen Information

<b>Immunogen</b>	A synthetic peptide of human TSC1
<b>Gene ID</b>	7248
<b>Swiss Prot</b>	Q92574
<b>Synonyms</b>	LAM,TSC

### Product information

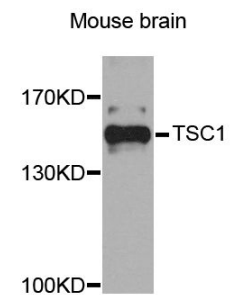
<b>Source</b>	Mouse
<b>Isotype</b>	IgG
<b>Purity</b>	Affinity purification
<b>Storage</b>	Store at 4°C. Avoid freeze / thaw cycles. Buffer: PBS with 0.02% sodium azide, pH7.3.

### Background

This gene encodes a growth inhibitory protein thought to play a role in the stabilization of tuberin. Mutations in this gene have been associated with tuberous sclerosis. Alternative splicing results in multiple transcript variants.

### Recommended Dilutions

WB 1:500 - 1:1000



Western blot analysis of extracts of mouse brain, using TSC1 antibody (A0721).

Secondary antibody: HRP Goat Anti-Mouse IgG (H+L) (AS003) at 1:10000 dilution.

Lysates/proteins: 25ug per lane.  
Blocking buffer: 3% nonfat dry milk in TBST.