

## IL17A Polyclonal Antibody

<b>Catalog No</b>	A0688	<b>Category</b>	Polyclonal Antibodies
<b>Applications</b>	WB	<b>Observed MW</b>	35kDa
<b>Cross-Reactivity</b>	Human,Mouse,Rat,Monkey	<b>Calculated MW</b>	17kDa

### Immunogen Information

<b>Immunogen</b>	Recombinant fusion protein containing a sequence corresponding to amino acids 24-155 of human IL17A (NP_002181.1).
<b>Gene ID</b>	3605
<b>Swiss Prot</b>	Q16552
<b>Synonyms</b>	CTLA-8,CTLA8,IL-17,IL-17A,IL17

### Product information

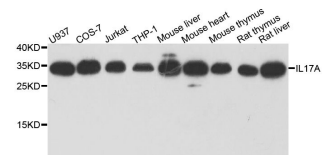
<b>Source</b>	Rabbit
<b>Isotype</b>	IgG
<b>Purity</b>	Affinity purification
<b>Storage</b>	Store at -20°C. Avoid freeze / thaw cycles. Buffer: PBS with 0.02% sodium azide, 50% glycerol, pH7.3.

### Background

The protein encoded by this gene is a proinflammatory cytokine produced by activated T cells. This cytokine regulates the activities of NF-kappaB and mitogen-activated protein kinases. This cytokine can stimulate the expression of IL6 and cyclooxygenase-2 (PTGS2/COX-2), as well as enhance the production of nitric oxide (NO). High levels of this cytokine are associated with several chronic inflammatory diseases including rheumatoid arthritis, psoriasis and multiple sclerosis.

### Recommended Dilutions

WB 1:200 - 1:500



Western blot analysis of extracts of various cell lines, using IL17A antibody (A0688) at 1:1000 dilution. Secondary antibody: HRP Goat Anti-Rabbit IgG (H+L) (AS014) at 1:10000 dilution.  
Lysates/proteins: 25ug per lane.  
Blocking buffer: 3% nonfat dry milk in TBST.  
Detection: ECL Enhanced Kit (RM00021).  
Exposure time: 30s.