

A0668

Leader in Biomolecular Solutions for Life Science



## ELL Rabbit pAb

Catalog No.: A0668

1 Publications

### Basic Information

**Observed MW**

68kDa

**Calculated MW**

68kDa

**Category**

Polyclonal Antibody

**Applications**

WB

**Cross-Reactivity**

Human, Mouse

### Background

Enables phosphatase binding activity. Involved in positive regulation of transcription, DNA-templated and snRNA transcription. Located in cytosol; nuclear body; and transcriptionally active chromatin. Part of transcription elongation factor complex.

### Recommended Dilutions

WB 1:200 - 1:500

### Immunogen Information

**Gene ID**

8178

**Swiss Prot**

P55199

**Immunogen**

A synthetic peptide of human ELL

**Synonyms**

MEN; ELL1; PPP1R68; C19orf17; ELL

### Contact



[www.abclonal.com](http://www.abclonal.com)

### Product Information

**Source**

Rabbit

**Isotype**

IgG

**Purification**

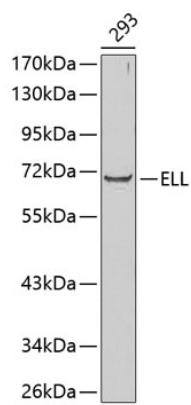
Affinity purification

**Storage**

Store at 4°C. Avoid freeze / thaw cycles.

Buffer: PBS with 0.02% sodium azide, pH7.3.

# Validation Data



Western blot analysis of extracts of 293 cells, using ELL antibody (A0668).  
Secondary antibody: HRP Goat Anti-Rabbit IgG (H+L) (AS014) at 1:10000 dilution.  
Lysates/proteins: 25µg per lane.  
Blocking buffer: 3% nonfat dry milk in TBST.