

A0602

Leader in Biomolecular Solutions for Life Science



## 14-3-3 alpha/beta Rabbit pAb

Catalog No.: A0602

### Basic Information

#### Observed MW

31kDa

#### Calculated MW

28kDa

#### Category

Mouse Monoclonal Antibody

#### Applications

WB, IF/ICC

#### Cross-Reactivity

Human

### Background

This gene encodes a protein belonging to the 14-3-3 family of proteins, members of which mediate signal transduction by binding to phosphoserine-containing proteins. This highly conserved protein family is found in both plants and mammals. The encoded protein has been shown to interact with RAF1 and CDC25 phosphatases, suggesting that it may play a role in linking mitogenic signaling and the cell cycle machinery. Two transcript variants, which encode the same protein, have been identified for this gene.

### Recommended Dilutions

WB 1:500 - 1:1000

IF/ICC 1:20 - 1:50

### Immunogen Information

#### Gene ID

7529

#### Swiss Prot

P31946

#### Immunogen

A synthetic peptide of human 14-3-3 alpha/beta

#### Synonyms

HS1; GW128; YWHAA; KCIP-1; HEL-S-1; 14-3-3 alpha/beta

### Contact



[www.abclonal.com](http://www.abclonal.com)

### Product Information

#### Source

Rabbit

#### Isotype

IgG

#### Purification

Affinity purification

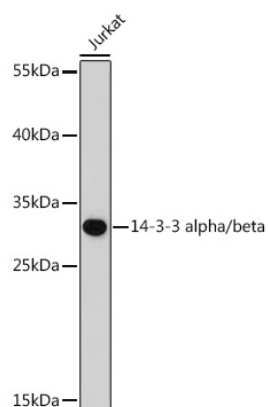
#### Storage

Store at 4°C. Avoid freeze / thaw cycles.

Buffer: PBS with 0.02% sodium azide, pH7.3.

## Validation Data

---



Western blot analysis of extracts of Jurkat cells, using 14-3-3 alpha/beta antibody (A0602).  
Secondary antibody: HRP Goat Anti-Rabbit IgG (H+L) (A5014) at 1:10000 dilution.  
Lysates/proteins: 25µg per lane.  
Blocking buffer: 3% nonfat dry milk in TBST.