

A0450

Leader in Biomolecular Solutions for Life Science



## NF-kB p65/RelA Rabbit pAb

Catalog No.: A0450

2 Publications

### Basic Information

#### Observed MW

60kDa

#### Calculated MW

60kDa

#### Category

Polyclonal Antibody

#### Applications

WB,IF/ICC,FC

#### Cross-Reactivity

Human,Mouse

### Background

NF-kappa-B is a ubiquitous transcription factor involved in several biological processes. It is held in the cytoplasm in an inactive state by specific inhibitors. Upon degradation of the inhibitor, NF-kappa-B moves to the nucleus and activates transcription of specific genes. NF-kappa-B is composed of NFKB1 or NFKB2 bound to either REL, RELA, or RELB. The most abundant form of NF-kappa-B is NFKB1 complexed with the product of this gene, RELA. Four transcript variants encoding different isoforms have been found for this gene.

### Recommended Dilutions

WB	1:500 - 1:1000
IF/ICC	1:20 - 1:50
FC	1:20 - 1:50

### Immunogen Information

#### Gene ID

5970

#### Swiss Prot

Q04206

#### Immunogen

A synthetic peptide of human NF-kB p65/RelA

#### Synonyms

p65; CMCU; NFKB3; AIF3BL3; NF-kB p65/RelA

### Contact



[www.abclonal.com](http://www.abclonal.com)

### Product Information

#### Source

Rabbit

#### Isotype

IgG

#### Purification

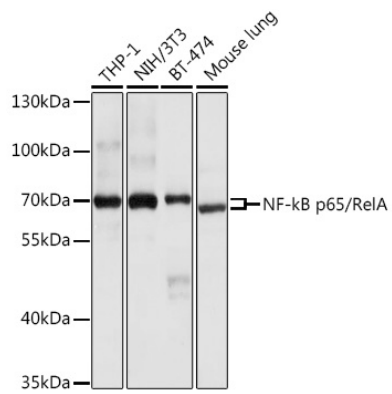
Affinity purification

#### Storage

Store at 4°C. Avoid freeze / thaw cycles.

Buffer: PBS with 0.02% sodium azide,pH7.3.

## Validation Data



Western blot analysis of various lysates using NF-kB p65/RelA Rabbit pAb (A0450) at 1:1000 dilution.  
Secondary antibody: HRP Goat Anti-Rabbit IgG (H+L) (A5014) at 1:10000 dilution.  
Lysates/proteins: 25µg per lane.  
Blocking buffer: 3% nonfat dry milk in TBST.  
Detection: ECL Basic Kit (RM00020).  
Exposure time: 10s.