

A0399

Leader in Biomolecular Solutions for Life Science



RUNX1 Rabbit pAb

Catalog No.: A0399

Basic Information

Observed MW

53kDa

Calculated MW

49kDa

Category

Polyclonal Antibody

Applications

WB,IF/ICC,FC

Cross-Reactivity

Human

Background

Core binding factor (CBF) is a heterodimeric transcription factor that binds to the core element of many enhancers and promoters. The protein encoded by this gene represents the alpha subunit of CBF and is thought to be involved in the development of normal hematopoiesis. Chromosomal translocations involving this gene are well-documented and have been associated with several types of leukemia. Three transcript variants encoding different isoforms have been found for this gene.

Recommended Dilutions

WB	1:500 - 1:1000
IF/ICC	1:20 - 1:50
FC	1:20 - 1:50

Immunogen Information

Gene ID

861

Swiss Prot

Q01196

Immunogen

A synthetic peptide of human RUNX1

Synonyms

AML1; CBFA2; EVI-1; AMLCR1; PEBP2aB; CBF2alpha; AML1-EVI-1; PEBP2alpha; RUNX1

Contact



www.abclonal.com

Product Information

Source

Rabbit

Isotype

IgG

Purification

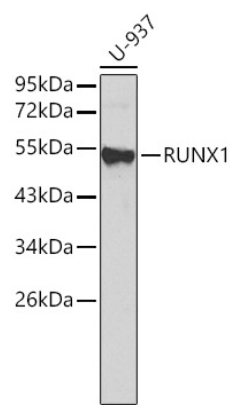
Affinity purification

Storage

Store at 4°C. Avoid freeze / thaw cycles.

Buffer: PBS with 0.02% sodium azide,pH7.3.

Validation Data



Western blot analysis of extracts of U-937 cells, using RUNX1 antibody (A0399).
Secondary antibody: HRP Goat Anti-Rabbit IgG (H+L) (A5014) at 1:10000 dilution.
Lysates/proteins: 25µg per lane.
Blocking buffer: 3% nonfat dry milk in TBST.