

A0381

Leader in Biomolecular Solutions for Life Science



## Cyclin B1 Rabbit pAb

Catalog No.: A0381

3 Publications

### Basic Information

#### Observed MW

60kDa

#### Calculated MW

48kDa

#### Category

Mouse Monoclonal Antibody

#### Applications

WB, ELISA

#### Cross-Reactivity

Human

### Background

The protein encoded by this gene is a regulatory protein involved in mitosis. The gene product complexes with p34(cdc2) to form the maturation-promoting factor (MPF). The encoded protein is necessary for proper control of the G2/M transition phase of the cell cycle.

### Recommended Dilutions

WB 1:500 - 1:2000

### Immunogen Information

#### Gene ID

891

#### Swiss Prot

P14635

#### Immunogen

A synthetic peptide corresponding to a sequence within amino acids 350-433 of human Cyclin B1 (NP\_114172.1).

#### Synonyms

CCNB; Cyclin B1

### Contact



[www.abclonal.com](http://www.abclonal.com)

### Product Information

#### Source

Rabbit

#### Isotype

IgG

#### Purification

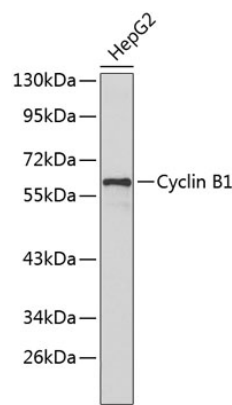
Affinity purification

#### Storage

Store at -20°C. Avoid freeze / thaw cycles.

Buffer: PBS with 0.01% thimerosal, 50% glycerol, pH 7.3.

Validation Data



Western blot analysis of lysates from HepG2 cells, using Cyclin B1 Rabbit pAb (A0381).  
Secondary antibody: HRP Goat Anti-Rabbit IgG (H+L) (A5014) at 1:10000 dilution.  
Lysates/proteins: 25µg per lane.  
Blocking buffer: 3% nonfat dry milk in TBST.