

A0353

Leader in Biomolecular Solutions for Life Science



Albumin Rabbit pAb

Catalog No.: A0353

9 Publications

Basic Information

Observed MW

69kDa

Calculated MW

69kDa

Category

Mouse Monoclonal Antibody

Applications

WB,IHC-P,IF/ICC,ELISA

Cross-Reactivity

Human,Mouse,Rat

Background

This gene encodes the most abundant protein in human blood. This protein functions in the regulation of blood plasma colloid osmotic pressure and acts as a carrier protein for a wide range of endogenous molecules including hormones, fatty acids, and metabolites, as well as exogenous drugs. Additionally, this protein exhibits an esterase-like activity with broad substrate specificity. The encoded preproprotein is proteolytically processed to generate the mature protein. A peptide derived from this protein, EPI-X4, is an endogenous inhibitor of the CXCR4 chemokine receptor.

Recommended Dilutions

WB	1:100 - 1:500
IF/ICC	1:50 - 1:200
IHC-P	1:50 - 1:100

Immunogen Information

Gene ID
213

Swiss Prot
P02768

Immunogen

Recombinant fusion protein containing a sequence corresponding to amino acids 25-609 of human Albumin (NP_000468.1).

Synonyms

HSA; FDAHT; PRO0883; PRO0903; PRO1341; Albumin

Contact



www.abclonal.com

Product Information

Source
Rabbit

Isotype
IgG

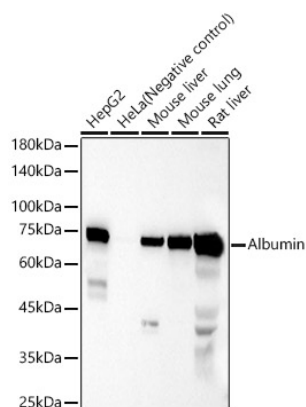
Purification
Affinity purification

Storage

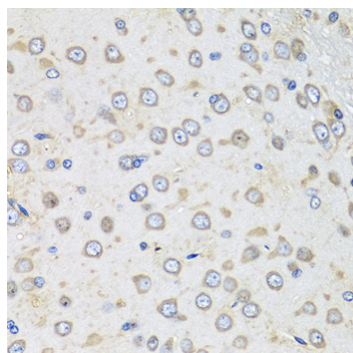
Store at -20°C. Avoid freeze / thaw cycles.

Buffer: PBS with 0.02% sodium azide,50% glycerol,pH7.3.

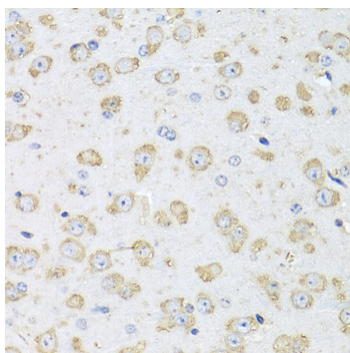
Validation Data



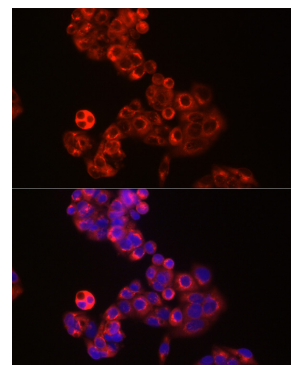
Western blot analysis of various lysates, using Albumin Rabbit pAb (A0353) at 1:400 dilution.
 Secondary antibody: HRP Goat Anti-Rabbit IgG (H+L) (AS014) at 1:10000 dilution.
 Lysates/proteins: 25µg per lane.
 Blocking buffer: 3% nonfat dry milk in TBST.
 Detection: ECL Basic Kit (RM00020).
 Exposure time: 30s.



Immunohistochemistry analysis of Albumin in paraffin-embedded rat brain using Albumin Rabbit pAb (A0353) at dilution of 1:100 (40x lens). Perform microwave antigen retrieval with 10 mM PBS buffer pH 7.2 before commencing with IHC staining protocol.



Immunohistochemistry analysis of Albumin in paraffin-embedded mouse brain using Albumin Rabbit pAb (A0353) at dilution of 1:100 (40x lens). Perform microwave antigen retrieval with 10 mM PBS buffer pH 7.2 before commencing with IHC staining protocol.



Immunofluorescence analysis of HepG2 cells using Albumin Rabbit pAb (A0353) at dilution of 1:50 (40x lens). Secondary antibody: Cy3 Goat Anti-Rabbit IgG (H+L) (AS007) at 1:500 dilution. Blue: DAPI for nuclear staining.