

A0259

Leader in Biomolecular Solutions for Life Science



## NME1/NM23A Rabbit pAb

Catalog No.: A0259

4 Publications

### Basic Information

#### Observed MW

21kDa/18kDa

#### Calculated MW

17kDa

#### Category

Mouse Monoclonal Antibody

#### Applications

WB, IHC-P, ELISA

#### Cross-Reactivity

Human, Mouse, Rat

### Background

This gene (NME1) was identified because of its reduced mRNA transcript levels in highly metastatic cells. Nucleoside diphosphate kinase (NDK) exists as a hexamer composed of 'A' (encoded by this gene) and 'B' (encoded by NME2) isoforms. Mutations in this gene have been identified in aggressive neuroblastomas. Two transcript variants encoding different isoforms have been found for this gene. Co-transcription of this gene and the neighboring downstream gene (NME2) generates naturally-occurring transcripts (NME1-NME2), which encodes a fusion protein comprised of sequence sharing identity with each individual gene product.

### Recommended Dilutions

|       |                |
|-------|----------------|
| WB    | 1:500 - 1:1000 |
| IHC-P | 1:50 - 1:200   |

### Immunogen Information

#### Gene ID

4830

#### Swiss Prot

P15531

#### Immunogen

A synthetic peptide corresponding to a sequence within amino acids 77-177 of human NME1/NM23A (NP\_937818.1).

#### Synonyms

NB; AWD; NBS; GAAD; NDKA; NM23; NDPKA; NDPK-A; NM23-H1; NME1/NM23A

### Contact



[www.abclonal.com](http://www.abclonal.com)

### Product Information

#### Source

Rabbit

#### Isotype

IgG

#### Purification

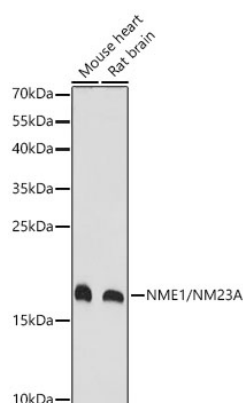
Affinity purification

#### Storage

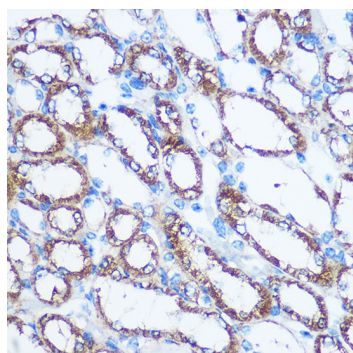
Store at -20°C. Avoid freeze / thaw cycles.

Buffer: PBS with 0.01% thimerosal, 50% glycerol, pH7.3.

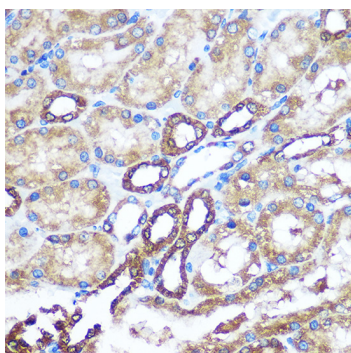
## Validation Data



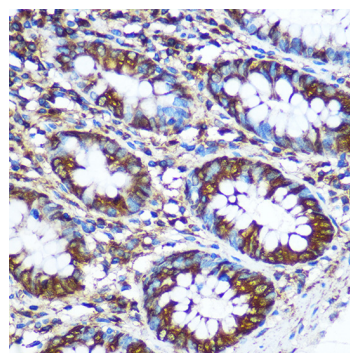
Western blot analysis of various lysates using NME1/NM23A Rabbit pAb (A0259) at 1:1000 dilution.  
Secondary antibody: HRP Goat Anti-Rabbit IgG (H+L) (A5014) at 1:10000 dilution.  
Lysates / proteins: 25 µg per lane.  
Blocking buffer: 3 % nonfat dry milk in TBST.  
Detection: ECL Basic Kit (RM00020).  
Exposure time: 1s.



Immunohistochemistry analysis of NME1/NM23A in paraffin-embedded Mouse kidney using NME1/NM23A Rabbit pAb (A0259) at dilution of 1:100 (40x lens). Perform microwave antigen retrieval with 10 mM PBS buffer pH 7.2 before commencing with IHC staining protocol.



Immunohistochemistry analysis of NME1/NM23A in paraffin-embedded Rat kidney using NME1/NM23A Rabbit pAb (A0259) at dilution of 1:100 (40x lens). Perform microwave antigen retrieval with 10 mM PBS buffer pH 7.2 before commencing with IHC staining protocol.



Immunohistochemistry analysis of NME1/NM23A in paraffin-embedded Human colon using NME1/NM23A Rabbit pAb (A0259) at dilution of 1:100 (40x lens). Perform microwave antigen retrieval with 10 mM PBS buffer pH 7.2 before commencing with IHC staining protocol.