

A0248

Leader in Biomolecular Solutions for Life Science



Cytokeratin 20 (KRT20) Rabbit pAb

Catalog No.: A0248

Basic Information

Observed MW

43kDa

Calculated MW

48kDa

Category

Polyclonal Antibody

Applications

WB,IF/ICC,ELISA

Cross-Reactivity

Human,Mouse

Background

The protein encoded by this gene is a member of the keratin family. The keratins are intermediate filament proteins responsible for the structural integrity of epithelial cells and are subdivided into cytokeratins and hair keratins. The type I cytokeratins consist of acidic proteins which are arranged in pairs of heterotypic keratin chains. This cytokeratin is a major cellular protein of mature enterocytes and goblet cells and is specifically expressed in the gastric and intestinal mucosa. The type I cytokeratin genes are clustered in a region of chromosome 17q12-q21.

Recommended Dilutions

| | |
|---------------|----------------|
| WB | 1:500 - 1:2000 |
| IF/ICC | 1:50 - 1:200 |

Immunogen Information

Gene ID

54474

Swiss Prot

P35900

Immunogen

Recombinant fusion protein containing a sequence corresponding to amino acids 245-424 of human Cytokeratin 20 (Cytokeratin 20 (KRT20)) (NP_061883.1).

Synonyms

K20; CD20; CK20; CK-20; KRT21; Cytokeratin 20 (KRT20)

Contact



www.abclonal.com

Product Information

Source

Rabbit

Isotype

IgG

Purification

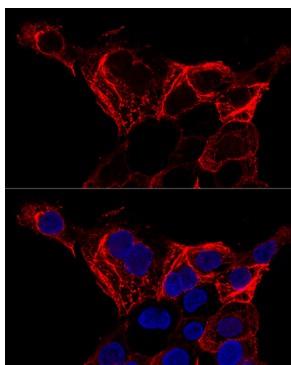
Affinity purification

Storage

Store at -20°C. Avoid freeze / thaw cycles.

Buffer: PBS with 0.02% sodium azide,50% glycerol,pH7.3.

Validation Data



Confocal immunofluorescence analysis of A-431 cells using Cytokeratin 20 (Cytokeratin 20 (KRT20)) antibody (A0248) at dilution of 1:200. Blue: DAPI for nuclear staining.