

A0247

Leader in Biomolecular Solutions for Life Science



Cytokeratin 19 (KRT19) Rabbit pAb

Catalog No.: A0247

7 Publications

Basic Information

Observed MW

40kDa

Calculated MW

44kDa

Category

Polyclonal Antibody

Applications

WB, IHC-P, IF/ICC, ELISA

Cross-Reactivity

Human, Mouse, Rat

Background

The protein encoded by this gene is a member of the keratin family. The keratins are intermediate filament proteins responsible for the structural integrity of epithelial cells and are subdivided into cytokeratins and hair keratins. The type I cytokeratins consist of acidic proteins which are arranged in pairs of heterotypic keratin chains. Unlike its related family members, this smallest known acidic cytokeratin is not paired with a basic cytokeratin in epithelial cells. It is specifically expressed in the periderm, the transiently superficial layer that envelopes the developing epidermis. The type I cytokeratins are clustered in a region of chromosome 17q12-q21.

Recommended Dilutions

WB	1:100 - 1:500
IHC-P	1:50 - 1:200
IF/ICC	1:50 - 1:200

Immunogen Information

Gene ID

3880

Swiss Prot

P08727

Immunogen

Recombinant fusion protein containing a sequence corresponding to amino acids 210-340 of human Cytokeratin 19 (KRT19) (NP_002267.2).

Synonyms

K19; CK19; K1CS; Cytokeratin 19 (KRT19)

Contact



www.abclonal.com

Product Information

Source

Rabbit

Isotype

IgG

Purification

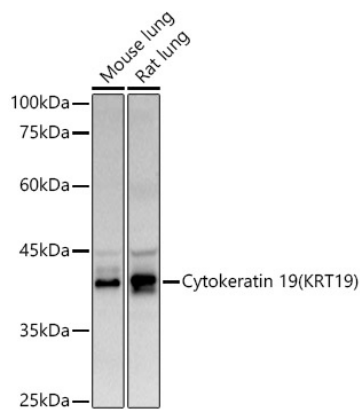
Affinity purification

Storage

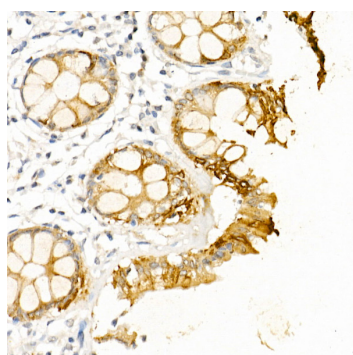
Store at -20°C. Avoid freeze / thaw cycles.

Buffer: PBS with 0.02% sodium azide, 50% glycerol, pH 7.3.

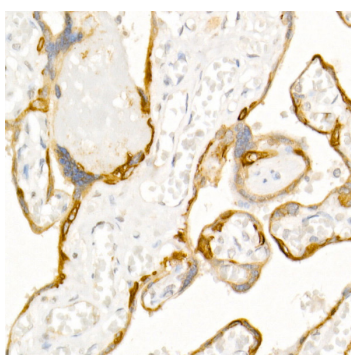
Validation Data



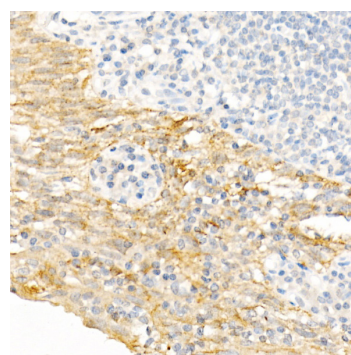
Western blot analysis of various lysates using Cytokeratin 19 (KRT19) Rabbit pAb (A0247) at 1:500 dilution.
 Secondary antibody: HRP Goat Anti-Rabbit IgG (H+L) (AS014) at 1:10000 dilution.
 Lysates/proteins: 25µg per lane.
 Blocking buffer: 3% nonfat dry milk in TBST.
 Detection: ECL Basic Kit (RM00020).
 Exposure time: 90s.



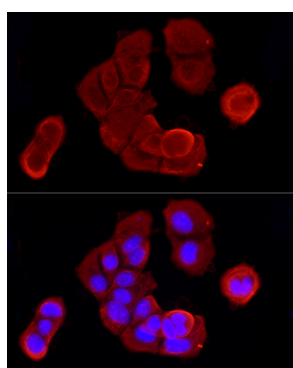
Immunohistochemistry analysis of Cytokeratin 19 (KRT19) in paraffin-embedded human colon using Cytokeratin 19 (KRT19) Rabbit pAb (A0247) at dilution of 1:50 (40x lens). Perform high pressure antigen retrieval with 10 mM citrate buffer pH 6.0 before commencing with IHC staining protocol.



Immunohistochemistry analysis of Cytokeratin 19 (KRT19) in paraffin-embedded human placenta using Cytokeratin 19 (KRT19) Rabbit pAb (A0247) at dilution of 1:50 (40x lens). Perform high pressure antigen retrieval with 10 mM citrate buffer pH 6.0 before commencing with IHC staining protocol.



Immunohistochemistry analysis of Cytokeratin 19 (KRT19) in paraffin-embedded human tonsil using Cytokeratin 19 (KRT19) Rabbit pAb (A0247) at dilution of 1:50 (40x lens). Perform high pressure antigen retrieval with 10 mM citrate buffer pH 6.0 before commencing with IHC staining protocol.



Immunofluorescence analysis of MCF7 cells using Cytokeratin 19 (KRT19) Rabbit pAb (A0247) at dilution of 1:100 (40x lens). Secondary antibody: Cy3 Goat Anti-Rabbit IgG (H+L) (AS007) at 1:500 dilution. Blue: DAPI for nuclear staining.