

A0243

Leader in Biomolecular Solutions for Life Science



## [KD Validated] IGF1R Rabbit pAb

Catalog No.: A0243

7 Publications

### Basic Information

#### Observed MW

100kDa/

#### Calculated MW

155kDa

#### Category

Polyclonal Antibody

#### Applications

WB, ELISA

#### Cross-Reactivity

Human, Mouse, Rat

### Background

This receptor binds insulin-like growth factor with a high affinity. It has tyrosine kinase activity. The insulin-like growth factor I receptor plays a critical role in transformation events. Cleavage of the precursor generates alpha and beta subunits. It is highly overexpressed in most malignant tissues where it functions as an anti-apoptotic agent by enhancing cell survival. Alternatively spliced transcript variants encoding distinct isoforms have been found for this gene.

### Recommended Dilutions

WB 1:1000 - 1:5000

### Immunogen Information

#### Gene ID

3480

#### Swiss Prot

P08069

#### Immunogen

Recombinant fusion protein containing a sequence corresponding to amino acids 1201-1367 of human IGF1R (NP\_000866.1).

#### Synonyms

IGFR; CD221; IGFIR; JTK13; 1R

### Contact



[www.abclonal.com](http://www.abclonal.com)

### Product Information

#### Source

Rabbit

#### Isotype

IgG

#### Purification

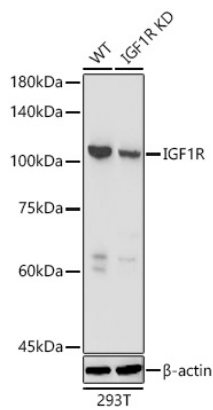
Affinity purification

#### Storage

Store at -20°C. Avoid freeze / thaw cycles.

Buffer: PBS with 0.01% thimerosal, 50% glycerol, pH7.3.

## Validation Data



Western blot analysis of lysates from wild type (WT) and IGF1R knockdown (KD) 293T cells using [KD Validated] IGF1R Rabbit pAb (A0243) at 1:3000 dilution.  
Secondary antibody: HRP Goat Anti-Rabbit IgG (H+L) (AS014) at 1:10000 dilution. Lysates/proteins: 25 µg per lane.  
Blocking buffer: 3% nonfat dry milk in TBST.  
Detection: ECL Basic Kit (RM00020).  
Exposure time: 10s.

Western blot analysis of various lysates using [KD Validated] IGF1R Rabbit pAb (A0243) at 1:3000 dilution.  
Secondary antibody: HRP Goat Anti-Rabbit IgG (H+L) (AS014) at 1:10000 dilution.  
Lysates/proteins: 25 µg per lane.  
Blocking buffer: 3 % nonfat dry milk in TBST.  
Detection: ECL Basic Kit (RM00020).  
Exposure time: 10s.

