

## MAPK3 Polyclonal Antibody

<b>Catalog No</b>	A0228	<b>Category</b>	Polyclonal Antibodies
<b>Applications</b>	WB,IHC	<b>Observed MW</b>	40kDa
<b>Cross-Reactivity</b>	Human,Mouse,Rat	<b>Calculated MW</b>	38kDa/40kDa/43kDa

### Immunogen Information

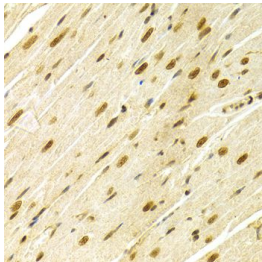
<b>Immunogen</b>	A synthetic peptide of human MAPK3
<b>Gene ID</b>	5595
<b>Swiss Prot</b>	P27361
<b>Synonyms</b>	ERK-1,ERK1,ERT2,HS44KDAP,HUMKER1A,p44-ERK1,p44-MAPK,P44ERK1,P44MAPK,PRKM3

### Product information

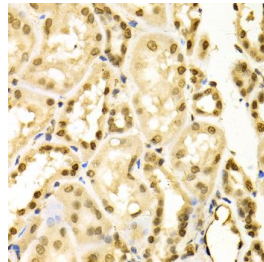
<b>Source</b>	Rabbit
<b>Isotype</b>	IgG
<b>Purity</b>	Affinity purification
<b>Storage</b>	Store at -20°C. Avoid freeze / thaw cycles. Buffer: PBS with 0.02% sodium azide, 50% glycerol, pH7.3.

### Background

The protein encoded by this gene is a member of the MAP kinase family. MAP kinases, also known as extracellular signal-regulated kinases (ERKs), act in a signaling cascade that regulates various cellular processes such as proliferation, differentiation, and cell cycle progression in response to a variety of extracellular signals. This kinase is activated by upstream kinases, resulting in its translocation to the nucleus where it phosphorylates nuclear targets. Alternatively spliced transcript variants encoding different protein isoforms have been described.



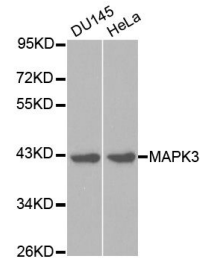
Immunohistochemistry of paraffin-embedded rat heart using MAPK3 Antibody (A0228) at dilution of 1:100 (40x lens).



Immunohistochemistry of paraffin-embedded human kidney using MAPK3 Antibody (A0228) at dilution of 1:100 (40x lens).

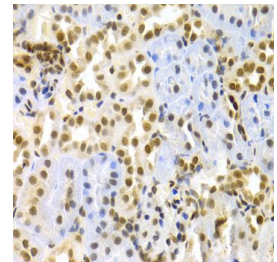
### Recommended Dilutions

WB	1:500 - 1:2000
IHC	1:50 - 1:200

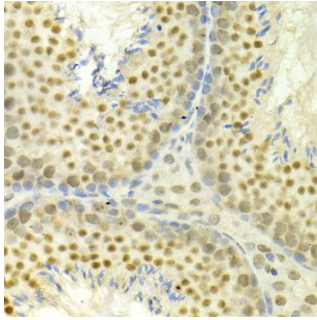


Western blot analysis of extracts of various cell lines, using MAPK3 antibody (A0228) at 1:1000 dilution.

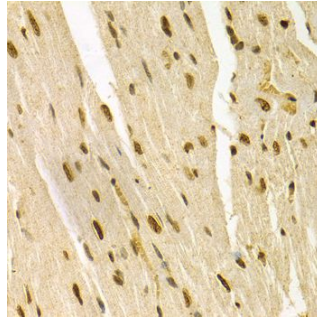
Secondary antibody: HRP Goat Anti-Rabbit IgG (H+L) (AS014) at 1:10000 dilution.  
Lysates/proteins: 25ug per lane.  
Blocking buffer: 3% nonfat dry milk in TBST.



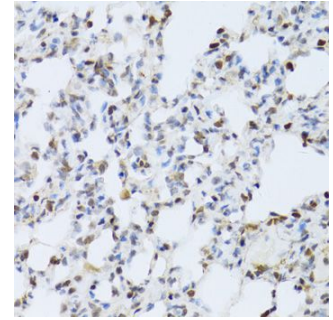
Immunohistochemistry of paraffin-embedded rat kidney using MAPK3 Antibody (A0228) at dilution of 1:100 (40x lens).



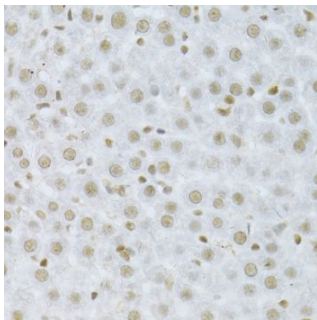
Immunohistochemistry of paraffin-embedded mouse testis using MAPK3 Antibody (A0228) at dilution of 1:100 (40x lens).



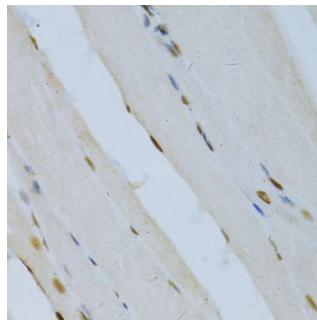
Immunohistochemistry of paraffin-embedded mouse heart using MAPK3 Antibody (A0228) at dilution of 1:100 (40x lens).



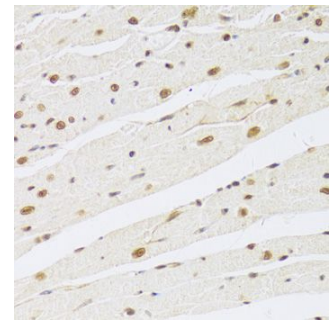
Immunohistochemistry of paraffin-embedded rat lung using MAPK3 Antibody (A0228) at dilution of 1:100 (40x lens).



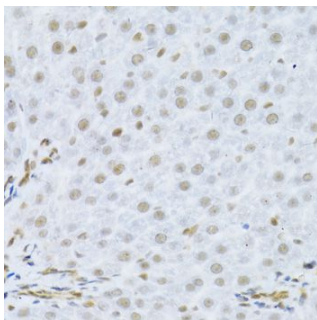
Immunohistochemistry of paraffin-embedded rat liver using MAPK3 Antibody (A0228) at dilution of 1:100 (40x lens).



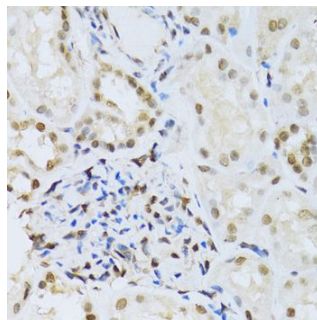
Immunohistochemistry of paraffin-embedded rat skeletal muscle using MAPK3 Antibody (A0228) at dilution of 1:100 (40x lens).



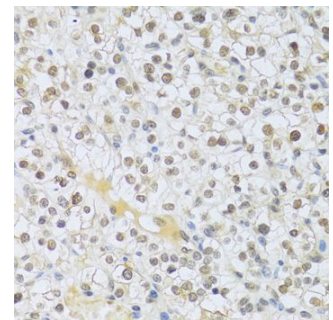
Immunohistochemistry of paraffin-embedded rat heart using MAPK3 Antibody (A0228) at dilution of 1:100 (40x lens).



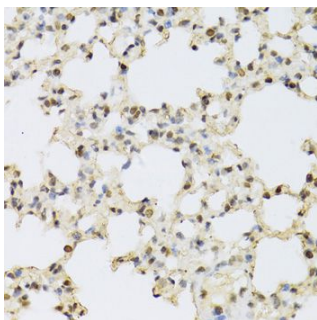
Immunohistochemistry of paraffin-embedded human liver using MAPK3 Antibody (A0228) at dilution of 1:100 (40x lens).



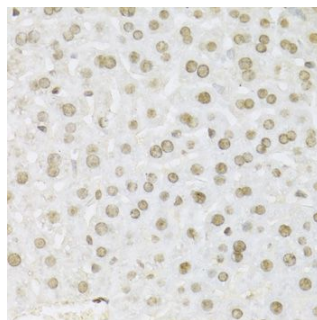
Immunohistochemistry of paraffin-embedded human kidney using MAPK3 Antibody (A0228) at dilution of 1:100 (40x lens).



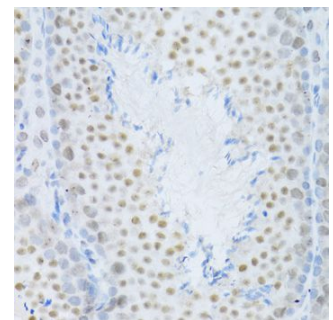
Immunohistochemistry of paraffin-embedded human kidney cancer using MAPK3 Antibody (A0228) at dilution of 1:100 (40x lens).



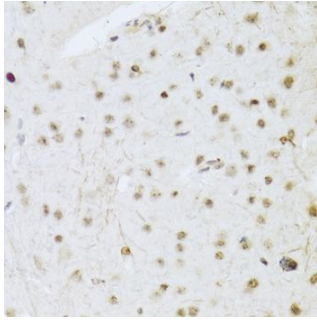
Immunohistochemistry of paraffin-embedded mouse lung using MAPK3 Antibody (A0228) at dilution of 1:100 (40x lens).



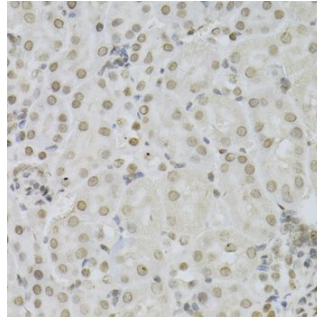
Immunohistochemistry of paraffin-embedded mouse liver using MAPK3 Antibody (A0228) at dilution of 1:100 (40x lens).



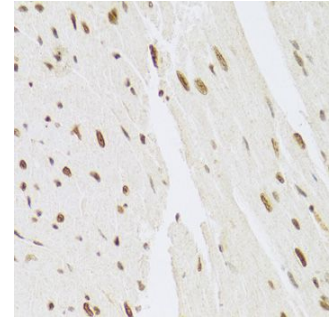
Immunohistochemistry of paraffin-embedded mouse testis using MAPK3 Antibody (A0228) at dilution of 1:100 (40x lens).



Immunohistochemistry of paraffin-embedded mouse brain using MAPK3 Antibody (A0228) at dilution of 1:100 (40x lens).



Immunohistochemistry of paraffin-embedded mouse kidney using MAPK3 Antibody (A0228) at dilution of 1:100 (40x lens).



Immunohistochemistry of paraffin-embedded mouse heart using MAPK3 Antibody (A0228) at dilution of 1:100 (40x lens).