

## BCL2 Polyclonal Antibody

<b>Catalog No</b>	A0208	<b>Category</b>	Polyclonal Antibodies
<b>Applications</b>	WB,IHC	<b>Observed MW</b>	26kDa
<b>Cross-Reactivity</b>	Human,Mouse,Rat	<b>Calculated MW</b>	22kDa/26kDa

### Immunogen Information

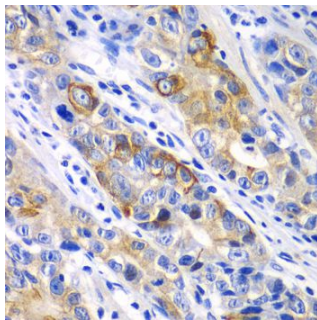
<b>Immunogen</b>	A synthetic peptide of human BCL2
<b>Gene ID</b>	596
<b>Swiss Prot</b>	P10415
<b>Synonyms</b>	Bcl-2,PPP1R50

### Product information

<b>Source</b>	Rabbit
<b>Isotype</b>	IgG
<b>Purity</b>	Affinity purification
<b>Storage</b>	Store at -20°C. Avoid freeze / thaw cycles. Buffer: PBS with 0.02% sodium azide, 50% glycerol, pH7.3.

### Background

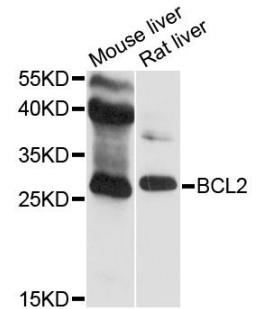
This gene encodes an integral outer mitochondrial membrane protein that blocks the apoptotic death of some cells such as lymphocytes. Constitutive expression of BCL2, such as in the case of translocation of BCL2 to Ig heavy chain locus, is thought to be the cause of follicular lymphoma. Alternative splicing results in multiple transcript variants.



Immunohistochemistry of paraffin-embedded human gastric cancer using BCL2 antibody (A0208) at dilution of 1:100 (40x lens).

### Recommended Dilutions

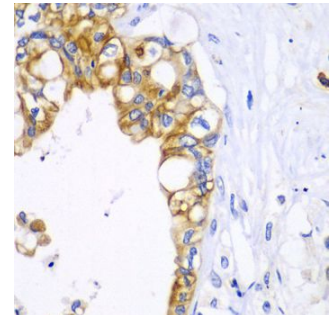
WB	1:500 - 1:2000
IHC	1:50 - 1:100



Western blot analysis of extracts of various cell lines, using BCL2 antibody (A0208) at 1:500 dilution. Secondary antibody: HRP Goat Anti-Rabbit IgG (H+L) (AS014) at 1:10000 dilution.

Lysates/proteins: 25ug per lane. Blocking buffer: 3% nonfat dry milk in TBST.

Detection: ECL Basic Kit (RM00020). Exposure time: 90s.



Immunohistochemistry of paraffin-embedded human liver cancer using BCL2 antibody (A0208) at dilution of 1:100 (40x lens).