

A0137

Leader in Biomolecular Solutions for Life Science



# TERF1 Rabbit pAb

Catalog No.: A0137 **1 Publications**

## Basic Information

### Observed MW

50kDa

### Calculated MW

50kDa

### Category

Polyclonal Antibody

### Applications

WB,IHC-P,ELISA

### Cross-Reactivity

Human,Rat

## Background

This gene encodes a telomere specific protein which is a component of the telomere nucleoprotein complex. This protein is present at telomeres throughout the cell cycle and functions as an inhibitor of telomerase, acting in cis to limit the elongation of individual chromosome ends. The protein structure contains a C-terminal Myb motif, a dimerization domain near its N-terminus and an acidic N-terminus. Multiple transcripts of this gene are alternatively spliced products.

## Recommended Dilutions

WB 1:500 - 1:2000

IHC-P 1:50 - 1:200

## Immunogen Information

### Gene ID

7013

### Swiss Prot

P54274

### Immunogen

Recombinant fusion protein containing a sequence corresponding to amino acids 52-275 of human TERF1 (NP\_059523.2).

### Synonyms

TRF; PIN2; TRF1; TRBF1; t-TRF1; hTRF1-AS; TERF1

## Contact

 [www.abclonal.com](http://www.abclonal.com)

## Product Information

### Source

Rabbit

### Isotype

IgG

### Purification

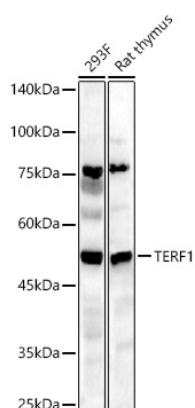
Affinity purification

### Storage

Store at -20°C. Avoid freeze / thaw cycles.

Buffer: PBS with 0.02% sodium azide,50% glycerol,pH7.3.

## Validation Data



Western blot analysis of various lysates, using TERF1 Rabbit pAb (A0137) at 1:2000 dilution.

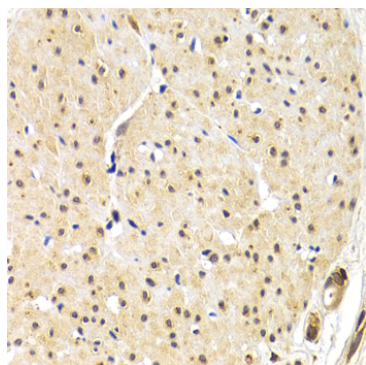
Secondary antibody: HRP Goat Anti-Rabbit IgG (H+L) (AS014) at 1:10000 dilution.

Lysates/proteins: 25µg per lane.

Blocking buffer: 3% nonfat dry milk in TBST.

Detection: ECL Basic Kit (RM00020).

Exposure time: 180s.



Immunohistochemistry analysis of paraffin-embedded human gastric cancer using TERF1 Rabbit pAb (A0137) at dilution of 1:200 (40x lens). Perform microwave antigen retrieval with 10 mM PBS buffer pH 7.2 before commencing with IHC staining protocol.