

A0123

Leader in Biomolecular Solutions for Life Science



# Cytokeratin 17 (KRT17) Rabbit pAb

Catalog No.: A0123

3 Publications

## Basic Information

### Observed MW

48kDa

### Calculated MW

48kDa

### Category

Polyclonal Antibody

### Applications

WB,IF/ICC,ELISA

### Cross-Reactivity

Human,Mouse

## Background

This gene encodes the type I intermediate filament chain keratin 17, expressed in nail bed, hair follicle, sebaceous glands, and other epidermal appendages. Mutations in this gene lead to Jackson-Lawler type pachyonychia congenita and steatocystoma multiplex.

## Recommended Dilutions

WB	1:500 - 1:1000
IF/ICC	1:50 - 1:200

## Immunogen Information

### Gene ID

3872

### Swiss Prot

Q04695

### Immunogen

A synthetic peptide corresponding to a sequence within amino acids 133-432 of human Cytokeratin 17 (KRT17) (NP\_000413.1).

### Synonyms

PC; K17; PC2; 39.1; CK-17; PCHC1; Cytokeratin 17 (KRT17)

## Contact



[www.abclonal.com](http://www.abclonal.com)

## Product Information

### Source

Rabbit

### Isotype

IgG

### Purification

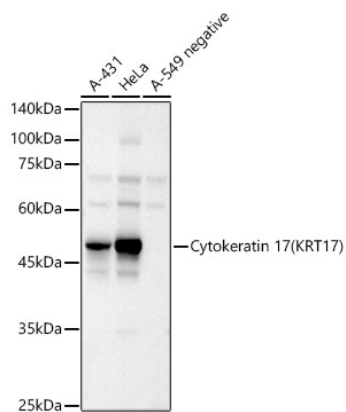
Affinity purification

### Storage

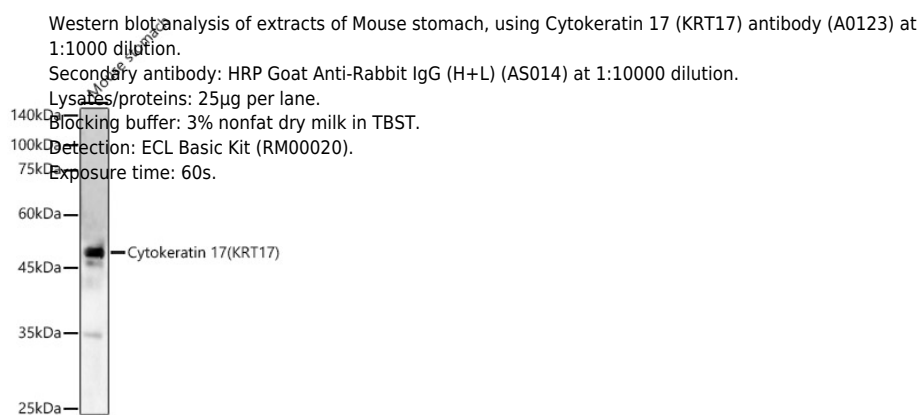
Store at -20°C. Avoid freeze / thaw cycles.

Buffer: PBS with 0.05% proclin300,50% glycerol,pH7.3.

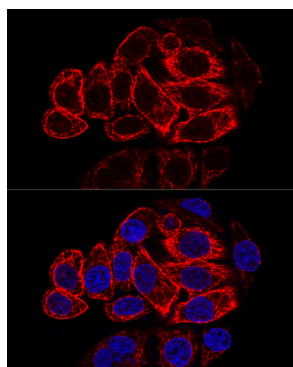
## Validation Data



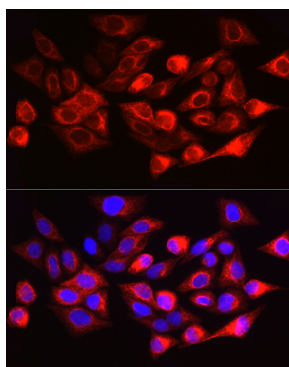
Western blot analysis of extracts of various cell lines, using Cytokeratin 17 (KRT17) antibody (A0123) at 1:1000 dilution.  
 Secondary antibody: HRP Goat Anti-Rabbit IgG (H+L) (AS014) at 1:10000 dilution.  
 Lysates/proteins: 25µg per lane.  
 Blocking buffer: 3% nonfat dry milk in TBST.  
 Detection: ECL Basic Kit (RM00020).  
 Exposure time: 1s.



Western blot analysis of extracts of Mouse stomach, using Cytokeratin 17 (KRT17) antibody (A0123) at 1:1000 dilution.  
 Secondary antibody: HRP Goat Anti-Rabbit IgG (H+L) (AS014) at 1:10000 dilution.  
 Lysates/proteins: 25µg per lane.  
 Blocking buffer: 3% nonfat dry milk in TBST.  
 Detection: ECL Basic Kit (RM00020).  
 Exposure time: 60s.



Confocal immunofluorescence analysis of HeLa cells using Cytokeratin 17 (KRT17) antibody (A0123) at dilution of 1:200. Blue: DAPI for nuclear staining.



Immunofluorescence analysis of HeLa cells using Cytokeratin 17 (KRT17) Rabbit pAb (A0123) at dilution of 1:200 (40x lens). Blue: DAPI for nuclear staining.