

## CDK1 Monoclonal Antibody

<b>Catalog No</b>	A0030	<b>Category</b>	Monoclonal Antibodies
<b>Applications</b>	WB, ICC	<b>Observed MW</b>	37kDa
<b>Cross-Reactivity</b>	Human, Rat	<b>Calculated MW</b>	27kDa/34kDa

### Immunogen Information

<b>Immunogen</b>	Recombinant protein of human CDK1
<b>Gene ID</b>	983
<b>Swiss Prot</b>	P06493
<b>Synonyms</b>	CDC2, CDC28A, P34CDC2

### Product information

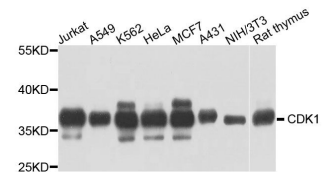
<b>Source</b>	Mouse
<b>Isotype</b>	IgG
<b>Purity</b>	Affinity purification
<b>Storage</b>	Store at -20°C. Avoid freeze / thaw cycles. Buffer: PBS with 0.02% sodium azide, 50% glycerol, pH7.3.

### Background

The protein encoded by this gene is a member of the Ser/Thr protein kinase family. This protein is a catalytic subunit of the highly conserved protein kinase complex known as M-phase promoting factor (MPF), which is essential for G1/S and G2/M phase transitions of eukaryotic cell cycle. Mitotic cyclins stably associate with this protein and function as regulatory subunits. The kinase activity of this protein is controlled by cyclin accumulation and destruction through the cell cycle. The phosphorylation and dephosphorylation of this protein also play important regulatory roles in cell cycle control. Alternatively spliced transcript variants encoding different isoforms have been found for this gene.

### Recommended Dilutions

WB	1:100 - 1:200
ICC	1:50 - 1:100



Western blot analysis of extracts of various cell lines, using CDK1 antibody (A0030) at 1:100 dilution. Secondary antibody: HRP Goat Anti-Mouse IgG (H+L) (AS003) at 1:10000 dilution.  
Lysates/proteins: 25ug per lane.  
Blocking buffer: 3% nonfat dry milk in TBST.  
Detection: ECL Basic Kit (RM00020).  
Exposure time: 10s.