

## CDK4 Monoclonal Antibody

<b>Catalog No</b>	A0016	<b>Category</b>	Monoclonal Antibodies
<b>Applications</b>	WB,IHC	<b>Observed MW</b>	34kDa
<b>Cross-Reactivity</b>	Human,Mouse	<b>Calculated MW</b>	20kDa/33kDa

### Immunogen Information

<b>Immunogen</b>	Recombinant protein of human CDK4
<b>Gene ID</b>	1019
<b>Swiss Prot</b>	P11802
<b>Synonyms</b>	CMM3,PSK-J3

### Product information

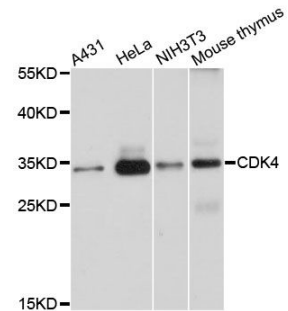
<b>Source</b>	Mouse
<b>Isotype</b>	IgG
<b>Purity</b>	Affinity purification
<b>Storage</b>	Store at 4°C. Avoid freeze / thaw cycles. Buffer: PBS with 0.02% sodium azide, pH7.3.

### Background

The protein encoded by this gene is a member of the Ser/Thr protein kinase family. This protein is highly similar to the gene products of *S. cerevisiae cdc28* and *S. pombe cdc2*. It is a catalytic subunit of the protein kinase complex that is important for cell cycle G1 phase progression. The activity of this kinase is restricted to the G1-S phase, which is controlled by the regulatory subunits D-type cyclins and CDK inhibitor p16(INK4a). This kinase was shown to be responsible for the phosphorylation of retinoblastoma gene product (Rb). Mutations in this gene as well as in its related proteins including D-type cyclins, p16(INK4a) and Rb were all found to be associated with tumorigenesis of a variety of cancers. Multiple polyadenylation sites of this gene have been reported.

### Recommended Dilutions

WB	1:500 - 1:1000
IHC	1:20 - 1:50



Western blot analysis of extracts of various cell lines, using CDK4 antibody (A0016) at 1:1000 dilution. Secondary antibody: HRP Goat Anti-Mouse IgG (H+L) (AS003) at 1:10000 dilution.  
Lysates/proteins: 25ug per lane.  
Blocking buffer: 3% nonfat dry milk in TBST.  
Detection: ECL Enhanced Kit (RM00021).  
Exposure time: 5s.